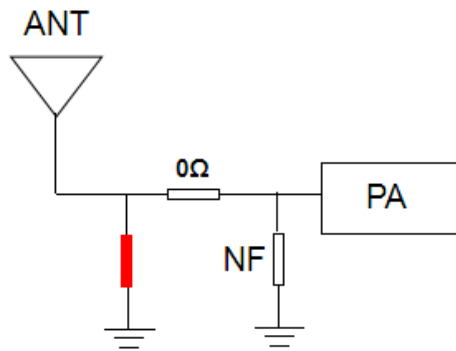


# Antenna Acceptance Letter

Applicable models	CP80		
Client	Shenzhen peicheng kejiyouxiangongsi		
Specifications describe			
	Product content	specifications	Customer Material Code
Specifications describe	WIFI antenna	Screen printing qm-cp80-wifi/wire length 175MM/ wire diameter 0.81MM/3 generation terminal	CP800G002
Changed			
No.	Date	Vision	Description of Changes
1	2022-07-05	V1.0	The new project
2			
3			

Supplier sample confirmation					
Research and development	structure	audit	determine		
			PASS <input checked="" type="checkbox"/> FAIL <input type="checkbox"/>		
Customer sample confirmation					
electronic	structure	project	procurement	QC	audit
Reasons for rejection or other considerations:					

## 1,matching circuit -WIFI antenna



The original matching circuit is unchanged

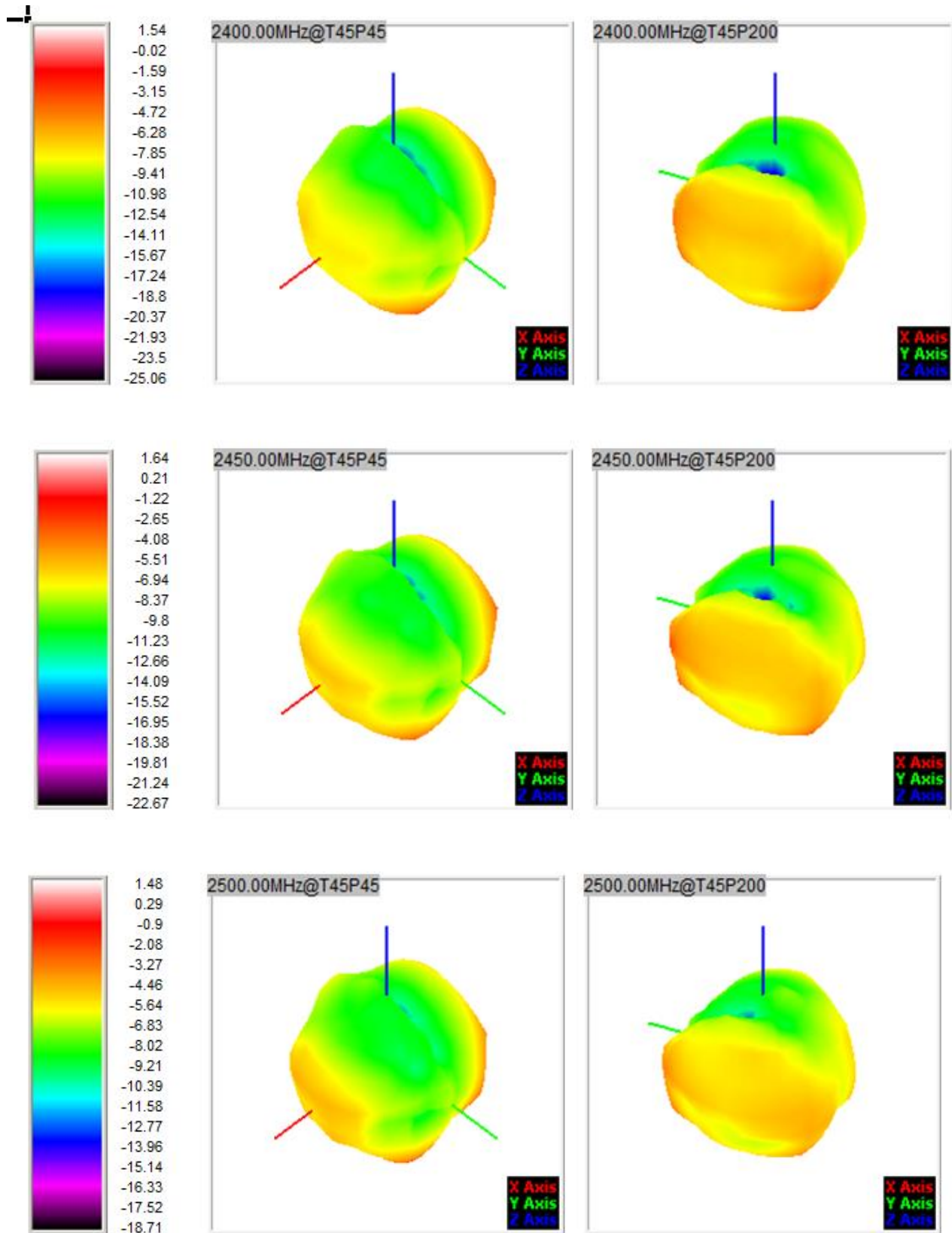
## 2,2400-2500MZ active data

	WIFI2400~2500Mz 802.11b 11Mbps		
Channel	1	6	11
TRP	14.53	14.72	15.21
TIS	-78.82	-82.13	-82.16

## 3、Antenna passive efficiency and gain

FETUKEJI											
Frequency ID	1	2	3	4	5	6	7	8	9	10	11
Frequency (MHz)	2400.0	2410.0	2420.0	2430.0	2440.0	2450.0	2460.0	2470.0	2480.0	2490.0	2500.0
Point Values											
Ant. Port Input Pwr. (dBm)	0.00	0.00	0.00	0.00	0.00	0.00	0.00	0.00	0.00	0.00	0.00
Tot. Rad. Pwr. (dBm)	-3.41	-3.55	-3.62	-3.47	-3.51	-3.31	-3.48	-3.72	-3.71	-3.51	-3.44
Peak EIRP (dBm)	1.54	1.49	1.45	1.55	1.47	1.64	1.51	1.35	1.39	1.51	1.48
Directivity (dBi)	4.95	5.04	5.07	5.02	4.98	4.95	5.00	5.07	5.10	5.02	4.92
Efficiency (dB)	-3.41	-3.55	-3.62	-3.47	-3.51	-3.31	-3.48	-3.72	-3.71	-3.51	-3.44
Efficiency (%)	45.60	44.10	43.50	44.90	44.50	46.60	44.80	42.50	42.50	44.50	45.30
Gain (dBi)	1.54	1.49	1.45	1.55	1.47	1.64	1.51	1.35	1.39	1.51	1.48
NHPRP ±Pi/4 (dBm)	-4.28	-4.43	-4.51	-4.36	-4.40	-4.19	-4.36	-4.61	-4.61	-4.42	-4.35
NHPRP ±Pi/6 (dBm)	-5.66	-5.82	-5.89	-5.73	-5.76	-5.55	-5.72	-5.97	-5.97	-5.77	-5.69
NHPRP ±Pi/8 (dBm)	-6.81	-6.96	-7.02	-6.86	-6.89	-6.67	-6.83	-7.08	-7.07	-6.85	-6.76
Upper Hem. PRP (dBm)	-7.17	-7.28	-7.32	-7.17	-7.22	-7.05	-7.28	-7.54	-7.49	-7.23	-7.08
Lower Hem. PRP (dBm)	-5.79	-5.94	-6.03	-5.89	-5.92	-5.70	-5.83	-6.05	-6.07	-5.91	-5.90
Upper Hem. PRP (%)	19.21	18.69	18.52	19.19	18.96	19.70	18.72	17.63	17.81	18.91	19.61
Lower Hem. PRP (%)	26.39	25.45	24.96	25.76	25.56	26.92	26.12	24.82	24.74	25.63	25.70

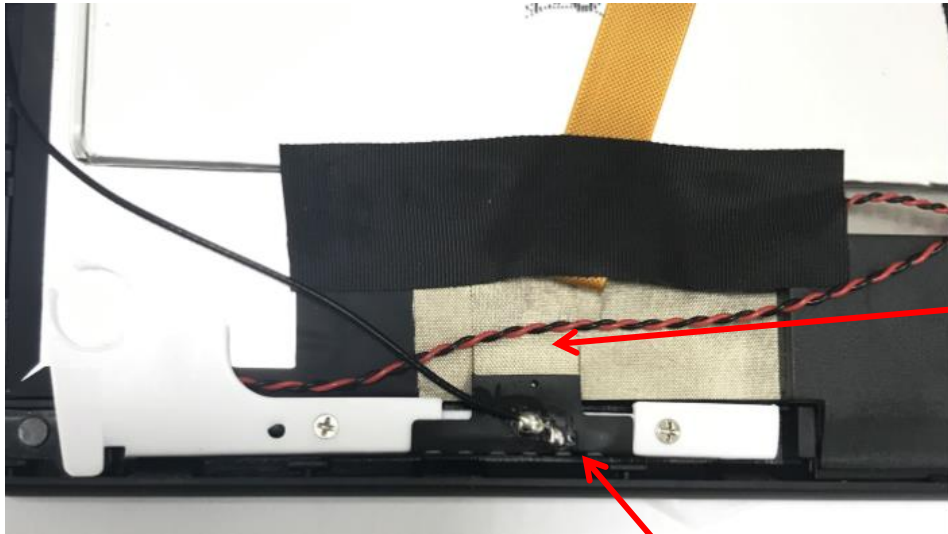
## 4、Apple figure



## 5、Antenna measurement

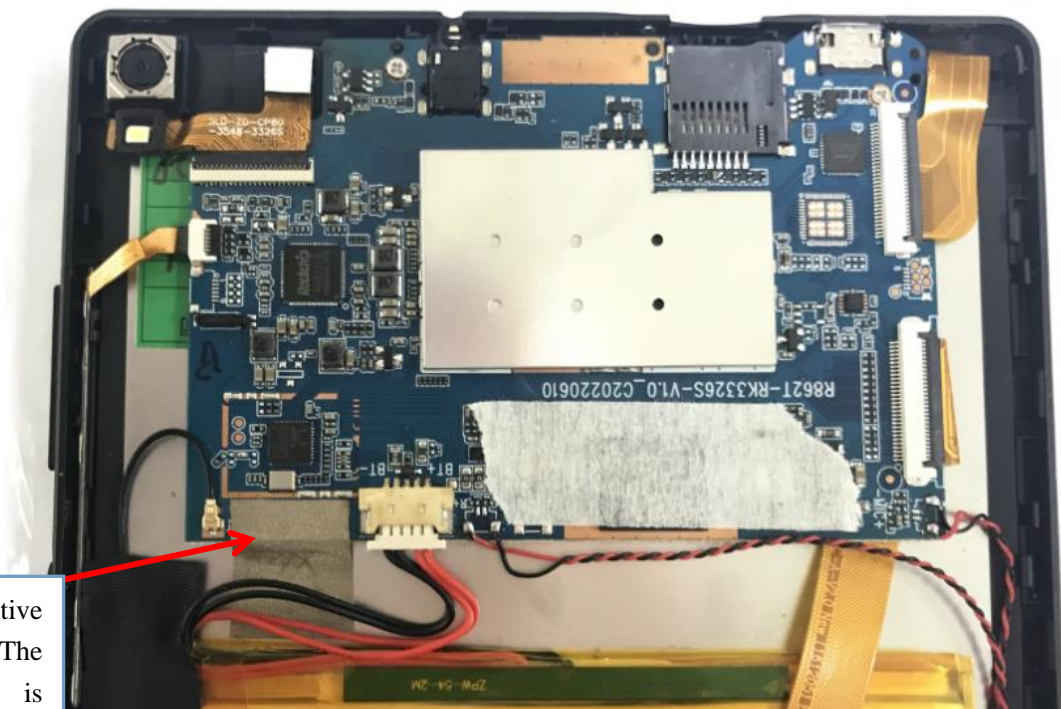


6、 This section describes the antenna position and environment handling



The copper leakage area of the antenna is grounded with a conductive cloth

The antenna is placed in this position



Attach conductive cloth here. The motherboard is grounded to the screen

7、Structural drawings

