

T2天线测试报告

T2 Antenna Test Report

一、天线简介/ Introduction of antenna

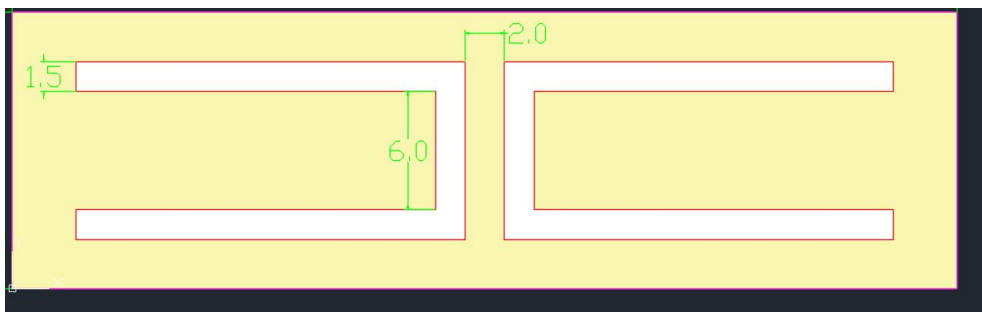
我司T2使用的蓝牙/ANT+天线为偶极子PCB天线，通过一端焊接另一端为IPEX接口的同轴线与主板连接，天线PCB为铜箔加喷锡工艺，铜箔厚度：1OZ，板材为FR-4，厚度1.0mm，天线工作频段为2400MHz-2500MHz。

The Bluetooth /ANT+ antenna used by our T2 is a dipole PCB antenna, which is connected to the main board through the coaxial line welded at one end and the IPEX interface at the other end. The antenna PCB is a copper and tin-spray process, the copper foil thickness is 1OZ, the plate is FR-1, the thickness is 1.0mm, and the antenna working band is 2400MHz-2500MHz.

二、天线外形/ Antenna shape

1. 天线尺寸/ Antenna Size

单位：mm



2. 实物图/picture of real products



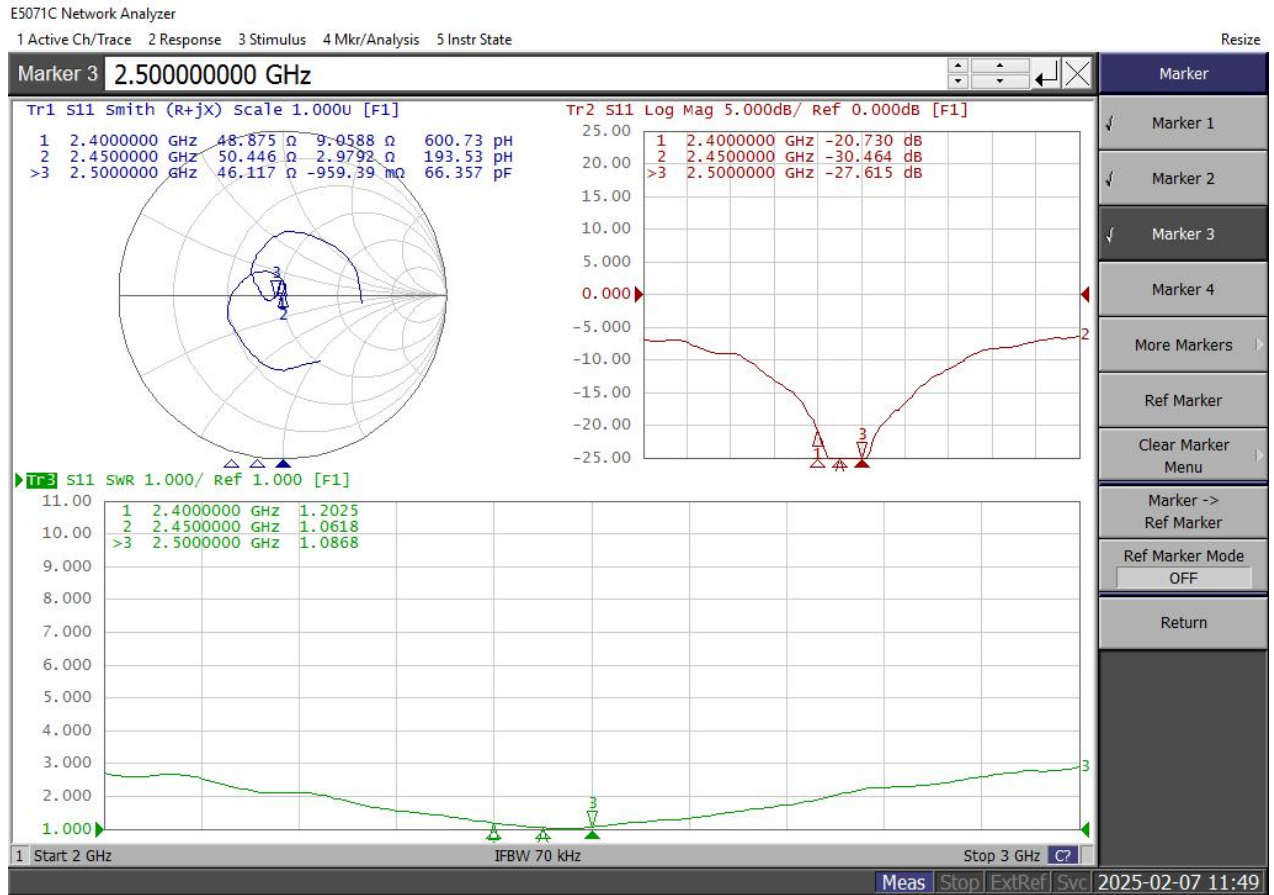
Manufacturer: Chengdu Chendian Intelligent Technology Co., Ltd.
Manufacturer add.: Sichuan, Chengdu, Gaoxinqu Xiqu, Tianchenlu 88Hao, 1Dong 1Danyuan
6022, 6023Hao

三、增益和效率/ Gain and efficiency

Frequency /MHz	MaxGain /dBi	Efficiency / %
2400	5.12	89.13
2402	5.14	87.22
2404	5.13	85.46
2406	5.15	83.37
2408	5.11	84.12
2410	5.09	84.92
2412	4.91	86.43
2414	4.83	88.72
2416	4.84	90.16
2418	4.73	86.73
2420	4.66	83.95
2422	4.91	84.23
2424	5.06	84.77
2426	5.23	84.92
2428	5.06	83.46
2430	4.78	82.22
2432	4.64	81.95
2434	4.29	81.06
2436	4.17	80.72
2438	4.31	83.49
2440	4.61	85.11
2442	4.66	83.37
2444	4.65	81.73
2446	4.64	79.43

2448	4.45	79.55
2450	4.38	79.62
2452	4.38	80.91
2454	4.39	83.43
2456	4.39	84.53
2458	4.16	80.16
2460	4.02	76.38
2462	4.27	76.86
2464	4.55	77.15
2466	4.7	77.62
2468	4.68	80.44
2470	4.64	83.56
2472	4.22	80.16
2474	3.94	76.66
2476	3.68	73.79
2478	4.01	77.58
2480	4.38	80.54

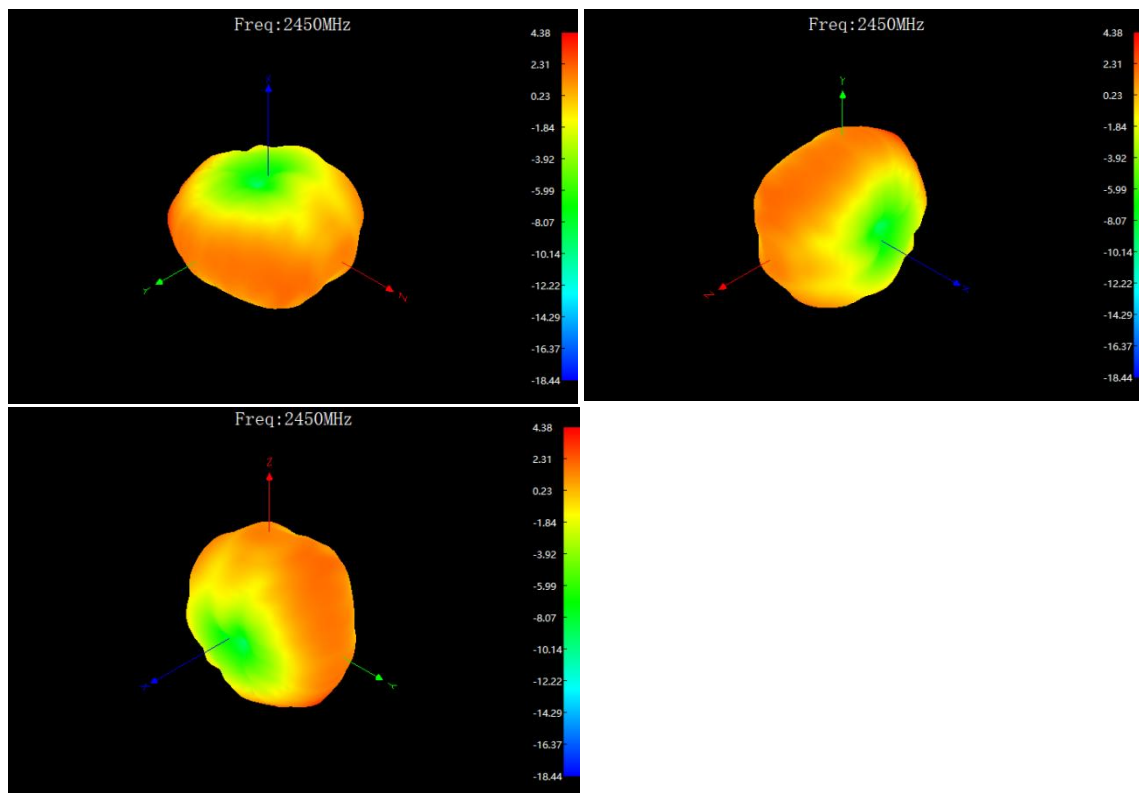
四、S11测试结果



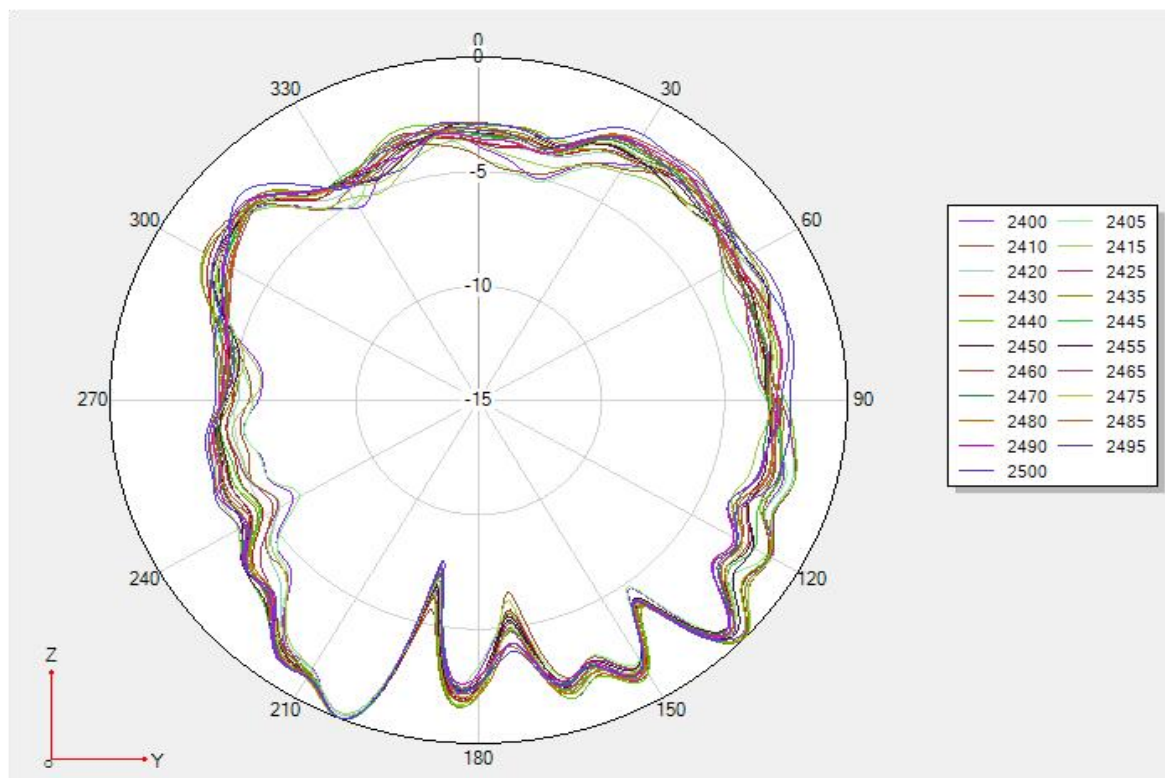
Frequency	VSWR
2400MHz-2500MHz	≤ 2.0

五、方向圖/ Directional map

- 3D



- E面



● H面

