

User's Manual

# Balance Mat

The device contains module which is granted with 20cm minimum distance from the human body.  
This equipment should be installed and operated with minimum distance of 20 cm between the radiator & your body.

# UNEEKOR

# Contents

## 1 Introduction

### 1.1 Installation and use

## 2 Application

### 2.1 Connecting to a PC with ethernet

### 2.2 Connecting to the router

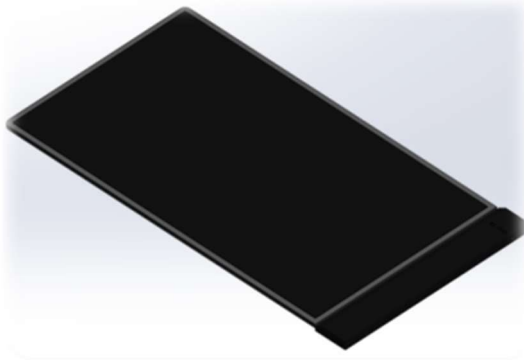
### 2.3 Connecting to Wi-Fi direct

### 2.4 Connecting to Wi-Fi with router

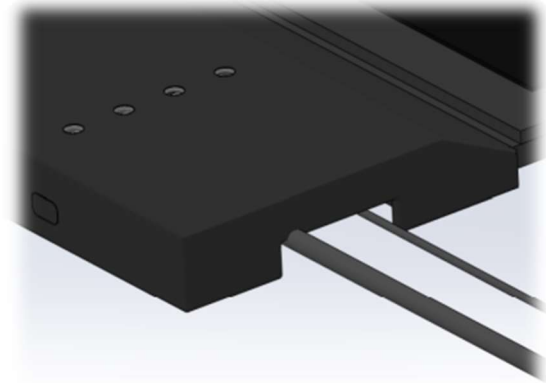
### 2.5 PC Application

# 1 Introduction

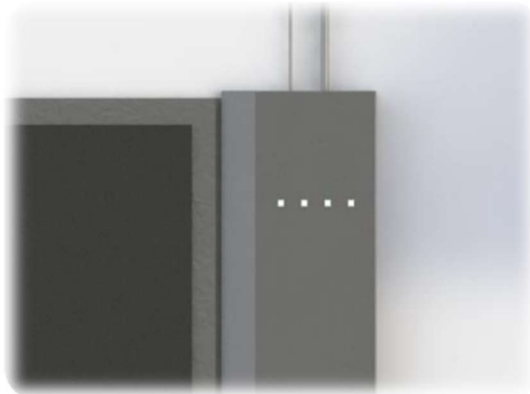
## 1.1 Installation and use



1.1.1



1.1.2



1.1.3

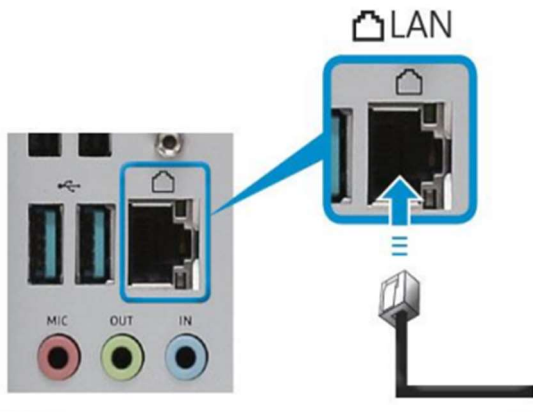
1.1.1 Install the product on a flat floor.

1.1.2 Power the included USB C cable. If you want an Ethernet connection, connect the Ethernet cable together.

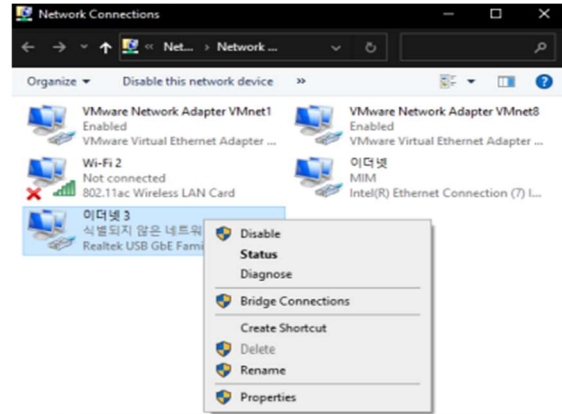
1.1.3 If the power cable is connected and power is supplied normally, the LED will turn on.

## 2 Application

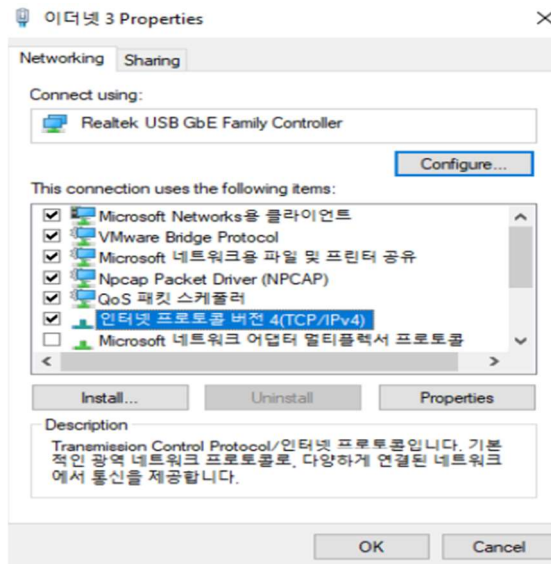
### 2.1 Connecting to a PC with Ethernet



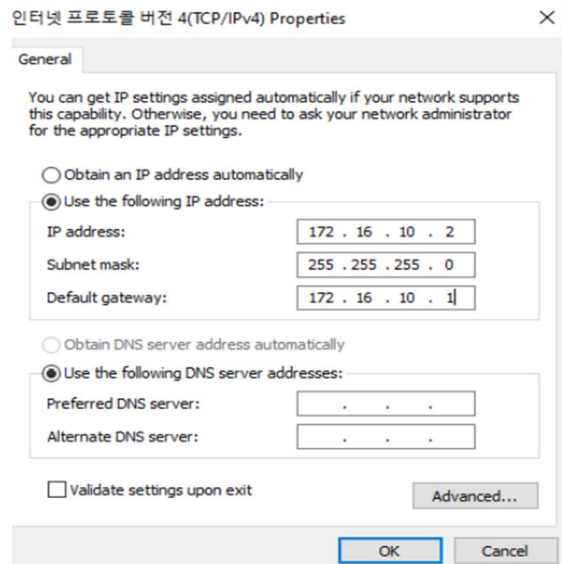
2.1.1



2.1.2



2.1.3



2.1.4

2.1.1.1 Connect the Ethernet cable to the connector on the PC.

2.1.2 Run "Network Connection" in the Windows OS. Select the icon associated with the product from among the Ethernet icons and then select "Properties".

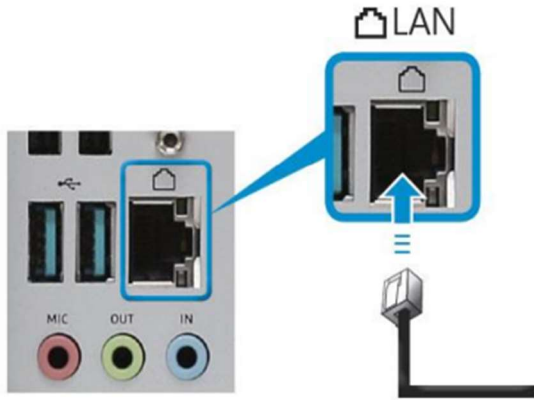
2.1.3 Select "Internet Protocol v4 (TCP/IPv4)" in the "Properties" window.

2.1.4 Select "Use the following IP address" and enter the information as follows.

- IP address: 172.16.10.2
- Subnet Mask: 255.255.255.0
- Default gateway: 172.16.10.1

## 2 Application

### 2.2 Connecting to the router

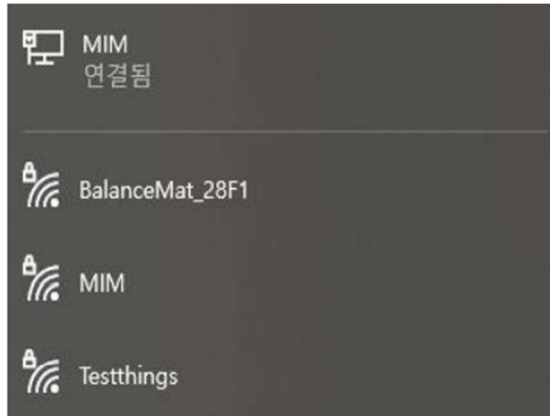


#### 2.2.1

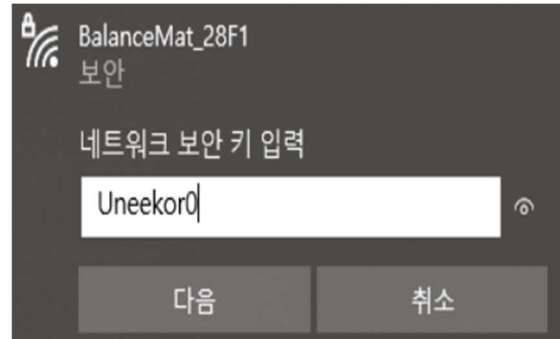
2.2.1 Connect the Ethernet cable to the connector on the router. If the product is connected to the router, the product automatically proceeds with an Ethernet connection.

## 2 Application

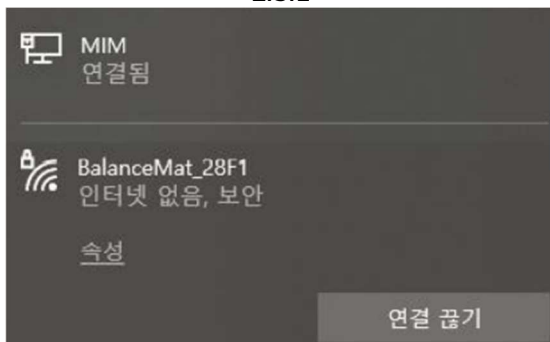
### 2.3 Connecting to Wi-Fi Direct



2.3.1



2.3.2



2.3.3

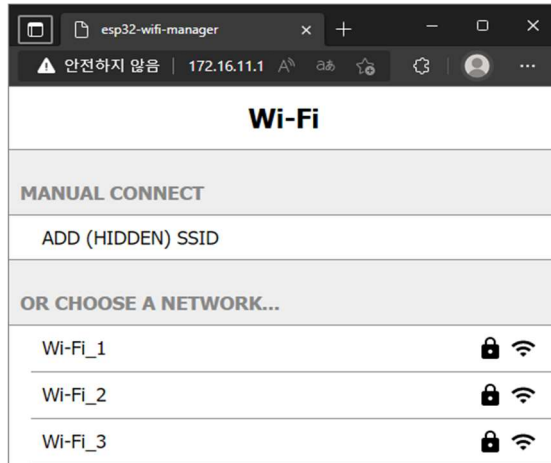
2.3.1 The product can be connected to a PC through Wi-Fi. For product and connectivity, activate the Wi-Fi scanning function of the PC.

2.3.2 Select a product that starts with "BalanceMat" from the discovered devices. Then enter "Uneekor0" as the password.

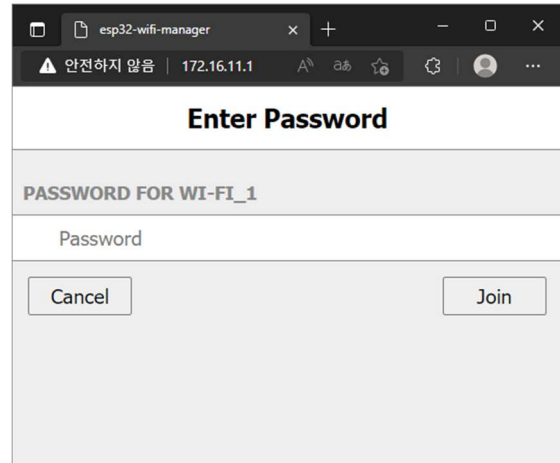
2.3.3 Confirm that the connection is complete.

## 2 Application

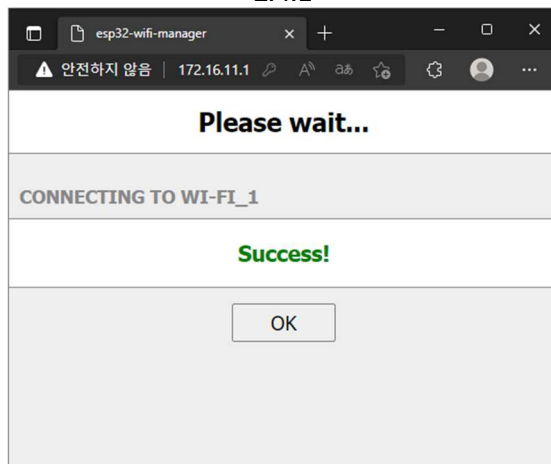
### 2.4 Connecting to Wi-Fi with router



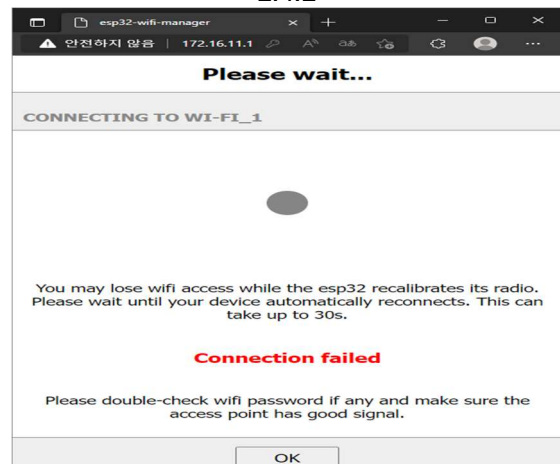
2.4.1



2.4.2

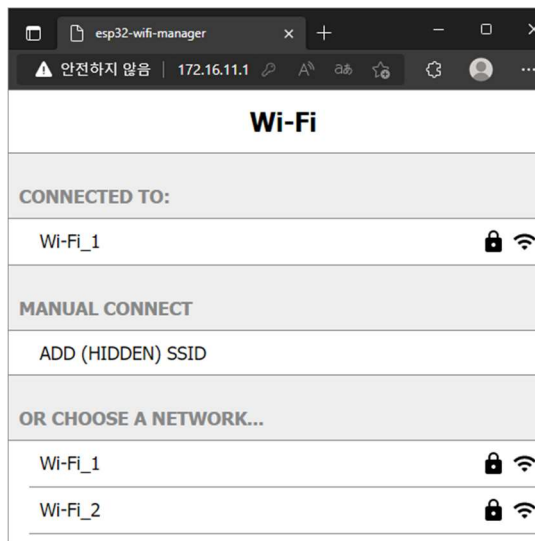


2.4.3

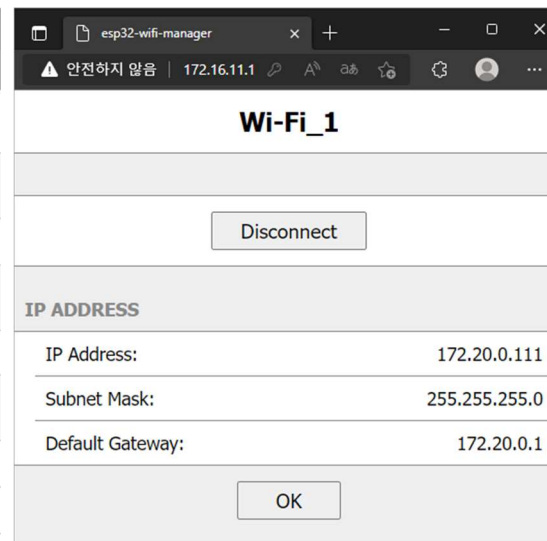


2.4.4

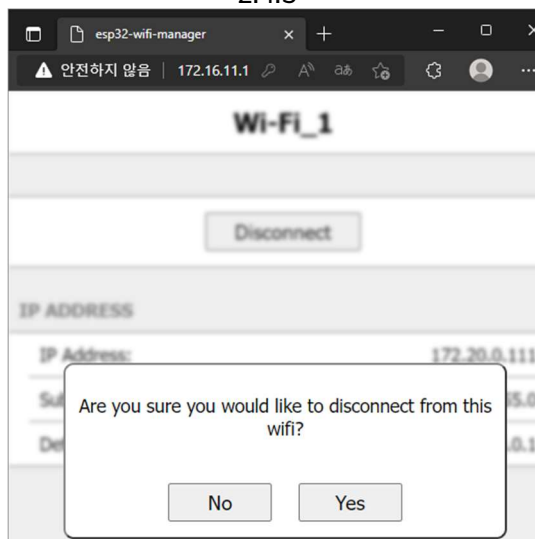
- 2.4.1 In another way, it is possible to connect to a Wi-Fi repeater. Type "172.16.11.1" in your PC's web browser. When entered, a connectable router such as an image is searched.
- 2.4.2 Click the router you want to connect to and enter the password for that router.
- 2.4.3 If the passwords match, the connection is completed.
- 2.4.4 If the passwords do not match, the connection will be failed, and the password must be entered again.



2.4.5



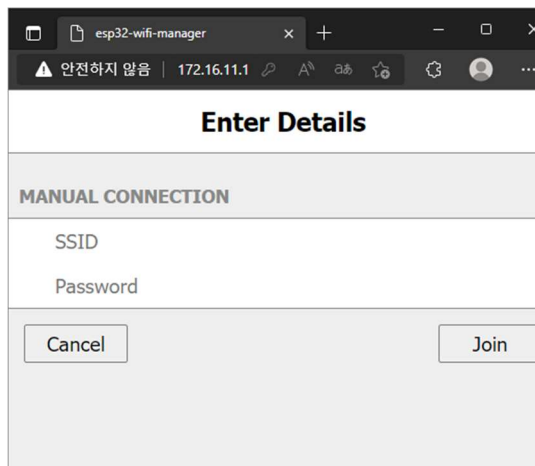
2.4.6



2.4.7

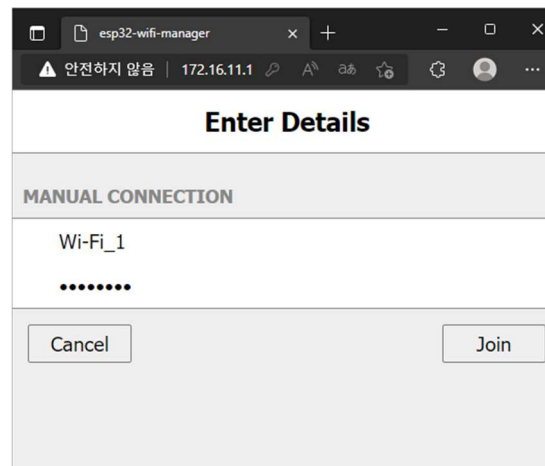
- 2.4.5 If the connection with the router is complete, the connected router is displayed at the top, as shown in the image.
- 2.4.6 If you want to disconnect from that router, click the connected router and click the "Disconnect" button.
- 2.4.7 If you click the "Disconnect" button, a pop-up appears as shown in the image, and if you click "Yes", the router is disconnected.





2.4.8

2.4.8 If there is no router among the searched routers that you want to connect to, the user can directly input it.



2.4.9

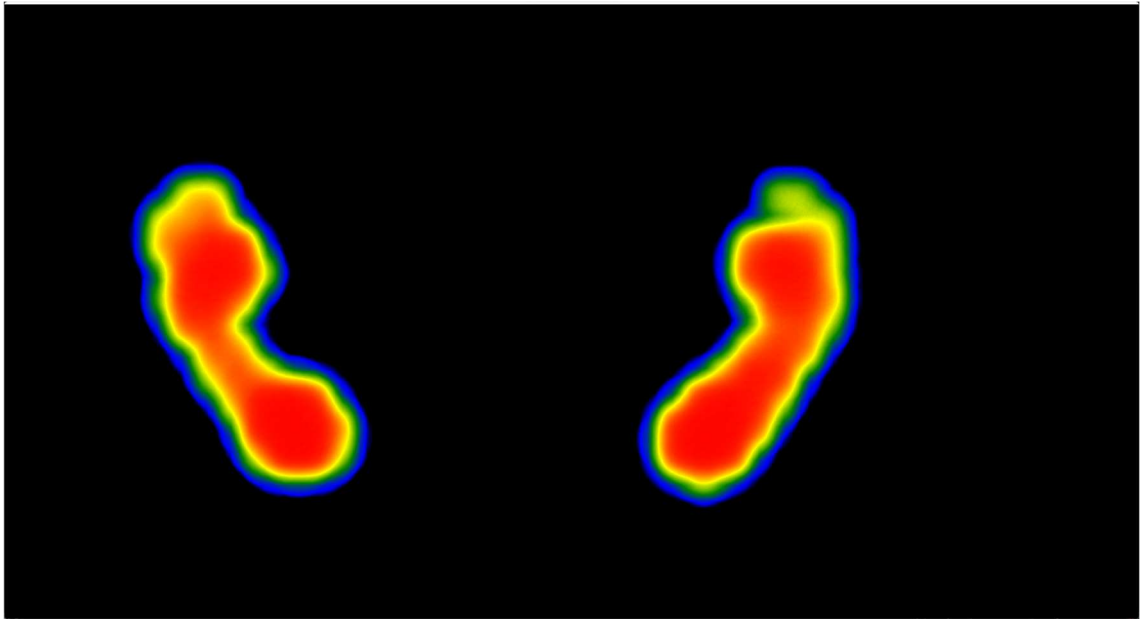
2.4.9 Enter the SSID and Password and click the "Join" button to connect to the router.

## 2 Application

### 2.5 PC Application



2.5.1



2.5.2

2.5.1 The user can control connected product.

Refresh	Search for connectable products
ComboBox	List of connectable products
Open / Close	Connected product can be controlled by running or stopping

2.5.2 The user can check real-time measurement data of foot pressure on the product.

## English

This device complies with Part 15 of the FCC Rules/Innovation Science and Economic Development Canada's licence-exempt RSS standard(s). Operation is subject to the following two conditions:

- (1) this device may not cause harmful interference, and
- (2) this device must accept any interference received, including interference that may cause undesired operation of the device.

## WARNING:

Any changes or modifications to this unit not expressly approved by the party responsible for compliance could void the user's authority to operate the equipment.

### **FCC Part 15.105 statement**

This equipment has been tested and found to comply with the limits for a Class B digital device, pursuant to part 15 of the FCC Rules. These limits are designed to provide reasonable protection against harmful interference in a residential installation.

This equipment generates, uses and can radiate radio frequency energy and, if not installed and used in accordance with the instructions, may cause harmful interference to radio communications. However, there is no guarantee that interference will not occur in a particular installation. If this equipment does cause harmful interference to radio or television reception, which can be determined by turning the equipment off and on, the user is encouraged to try to correct the interference by one or more of the following measures:

- Reorient or relocate the receiving antenna.
- Increase the separation between the equipment and receiver.
- Connect the equipment into an outlet on a circuit different from that to which the receiver is connected.
- Consult the dealer or an experienced radio/TV technician for help.