

Warming Reminding

It work usually fine within the 10v-14.4v range
It's nominally 12 volts but always fluctuating
if would change color automatically or run single color, you can control by the app

Common problem

Does it need a fuse?

- No, it needn't. It doesn't pull that much power.

Is there any accessory to reinforce the light belt
- 3M Back-adhesive + bolts/ cable ties.

When the lights turned off will they drain the battery?

- if you shut your car and the plug doesn't shut off then yes in due time it may drain your battery but it's a low volt. So you can power on by another ways, simply shut them off then you have no worries.

Can it get steady white ?

- It's more of an off white or a bluish white, which is normal.

Line connection-Exterior Neon Lights

There are many wiring ways to power on LED Neon Lights kit

1. Can connect it to the Headlight's fuse/Fog light's fuse

When you don't want to use the lights, you can just turn off the headlight or fog light and turn off the car engine.

2. Can connect it to the cigarette adapter

Trying to power the strip light by the cigarette adapter with a switch button, it can cut off the power completely.

3. Can connect it to the Battery

You can directly turn on the light through the APP to control. The strip light is turned off by the app, then it will go into the standby mode as well as in the state of receiving signals, which will need current and consume power.



P1

Installation Diagram-Exterior Neon Lights



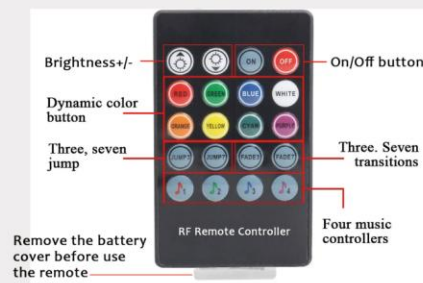
Neon Lights kit 4PCS

Neon Lights kit 6PCS

Installation Diagram-Interior Neon Lights



If it comes with the remote



P2

How to Operate the APP

Download and Install the "Lotus Lantern" APP
Scan the QR-Code to download the APP or search for "Lotus Lantern" on Google Play or APP store to download it.

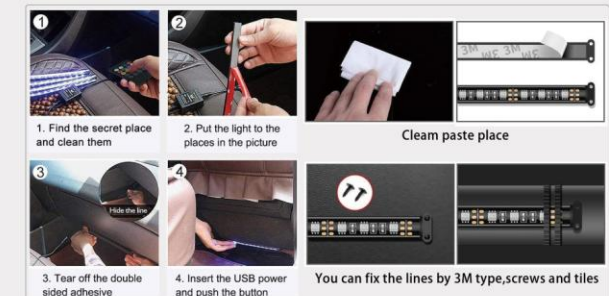
This APP support Andriod 4.3 above/ISO 8.0 above



Download local music on Iphone

- 1, Install iTunes software on your computer (Apple or Windows)
- 2, Log in to iTunes with the same Apple ID account on Iphone
- 3, Use iTunes to import downloaded music files on your computer
- 4, The imported music files will be synchronized to Iphone in real time
- 5, Restart Lotuslantern and switch to Music mode to see the newly imported files

Installation Steps - Interior Neon Lights



P3

This equipment has been tested and found to comply with the limits for a Class B digital device, pursuant to part 15 of the FCC Rules. These limits are designed to provide reasonable protection against harmful interference in a residential installation. This equipment generates, uses and can radiate radio frequency energy and, if not installed and used in accordance with the instructions, may cause harmful interference to radio communications. However, there is no guarantee that interference will not occur in a particular installation. If this equipment does cause harmful interference to radio or television reception, which can be determined by turning the equipment off and on, the user is encouraged to try to correct the interference by one or more of the following measures:

- Reorient or relocate the receiving antenna.
- Increase the separation between the equipment and receiver.
- Connect the equipment into an outlet on a circuit different from that to which the receiver is connected.
- Consult the dealer or an experienced radio/TV technician for help.

Caution: Any changes or modifications to this device not explicitly approved by manufacturer could void your authority to operate this equipment.

This device complies with part 15 of the FCC Rules. Operation is subject to the following two conditions: (1) This device may not cause harmful interference, and (2) this device must accept any interference received, including interference that may cause undesired operation.

The device has been evaluated to meet general RF exposure requirement.