

CE FC IP65

Specification

Model	SLL-C
Unlocking	Fingerprint unlock\Phone bluetooth APP unlock
Software Versions	IOS、Android 4.3
Material	Brass
USB Port	Micro USB
Appearance	Metallic paint
Temperature Range	-20°C~70°C
Battery	600mAh
User Storage	100 Fingerprints
Bluetooth Version	BLE4.2
Waterproof Rate	IP65

1

Operation steps

Register /login

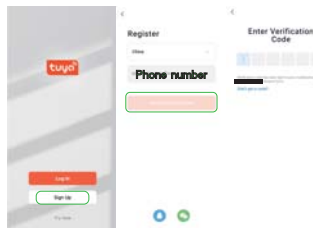
1 Download the App

Search for "Doodle Smart" in the mobile app store or scan the QR code to download the app

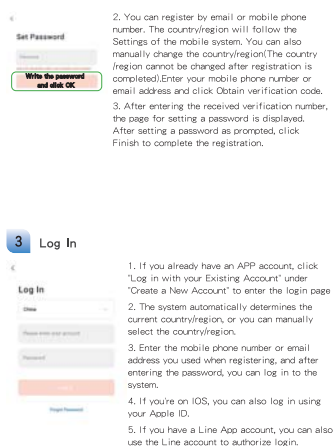


2 Register

1. Click "Register", and the privacy policy page of The Doodle Smart platform will pop up. After reading and agreeing, enter the account registration page.



2



3

Add smart lock

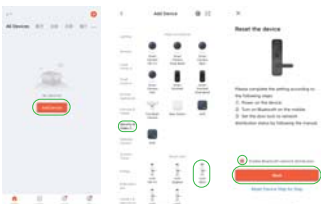
1 Activate the lock

1. Turn on the bluetooth of the mobile phone, and insert the USB charging cable into the port to activate the device (the red light will turn on after insertion, and remove the USB charging cable after adding the lock successfully)



2 Add the lock

1. Click "Add Device" on the home page to enter the add page, select "Security & Video Surveillance" for the category on the left, and then select "Lock (BLE)" on the right.



4

2. Enter the device adding page, check as required, check "Enable Bluetooth network distribution", and click "Next".



3. After searching for the lock, click the "+" on the right side of the lock, wait for the lock to be added and click "Done" on the upper right.

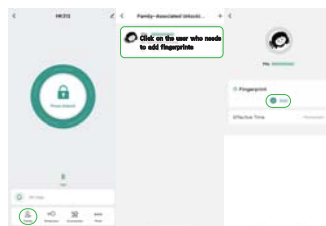
Input Fingerprint

1. On the device page, click "Family" in the lower left corner.

2. Select a member to add fingerprints and click to enter.

3. Enter the user management page, click "+" Add".

4. Enter the "How to Add Fingerprint to Unlock" interface, click "Start Capturing" below.



5



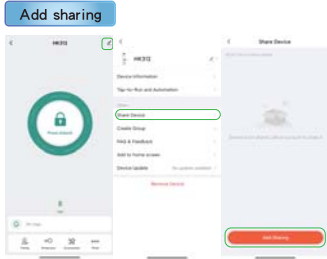
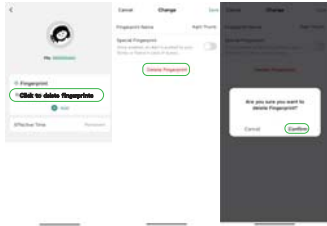
5. At this time, the green light on the fingerprint lock keeps flashing, and the finger that needs to be added is pressed 3 times in a row, until the page of the mobile phone displays "Added", you can choose to enter the user name of the fingerprint to facilitate subsequent fingerprint management, and finally click "OK".

Delete User

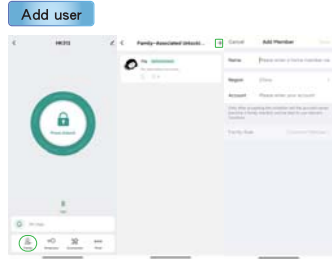
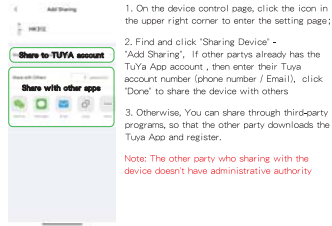
1. Enter the user management page, select the fingerprint to be deleted and click.

2. Select "Delete Fingerprint", and pop up the pop-up window "Are you sure you want to delete this fingerprint?", click "Confirm", the green light on the device indicates that the fingerprint has been deleted successfully.

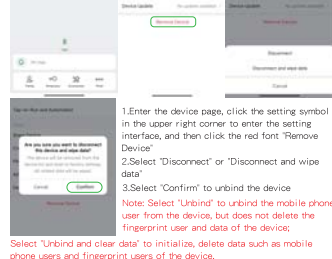
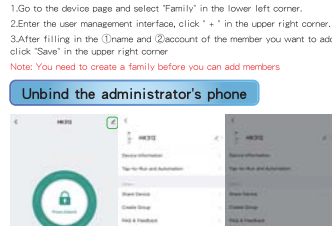
6



7



8



9

Attention Points

Indicator Status Guide

- (1) Indicate the success of identification and unlock of the mobile phone, and the green light is on.
- (2) Fingerprint identification error, red light.
- (3) Charging status: the red light keeps on.
- (4) Full: The red light is off.
- (5) Low power state: after unlocking, the red light flashes continuously for 10 seconds.
- (6) Emergency charging
Please charge it as soon as possible after the warning of low battery. If the battery is too low to unlock, you can use the Micro Usb of fingerprint lock for emergency charging.
- (7) It is recommended to fully charge the battery before first use.

10

This device complies with part 15 of the FCC Rules. Operation is subject to the following two conditions: (1) this device may not cause harmful interference, and (2) this device must accept any interference received, including interference that may cause undesired operation.

Any changes or modifications not expressly approved by the party responsible for compliance could void the user's authority to operate the equipment.

NOTE: This equipment has been tested and found to comply with the limits for a Class B digital device, pursuant to Part 15 of the FCC Rules. These limits are designed to provide reasonable protection against harmful interference in a residential installation. This equipment generates, uses and can radiate radio frequency energy and, if not installed and used in accordance with the instructions, may cause harmful interference to radio communications.

However, there is no guarantee that interference will not occur in a particular installation.

If this equipment does cause harmful interference to radio or television reception, which can be determined by turning the equipment off and on, the user is encouraged to try to correct the interference by one or more of the following measures:

- Reorient or relocate the receiving antenna.
- Increase the separation between the equipment and receiver.
- Connect the equipment into an outlet on a circuit different from that to which the receiver is connected.
- Consult the dealer or an experienced radio/TV technician for help.

The device has been evaluated to meet general RF exposure requirement. The device can be used in portable exposure condition without restriction.