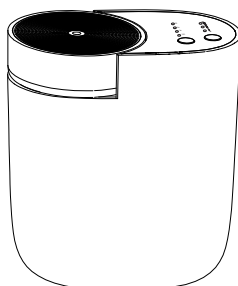


# PRODUCT MANUAL

## Aroma Diffuser



Scent marketing



Android system



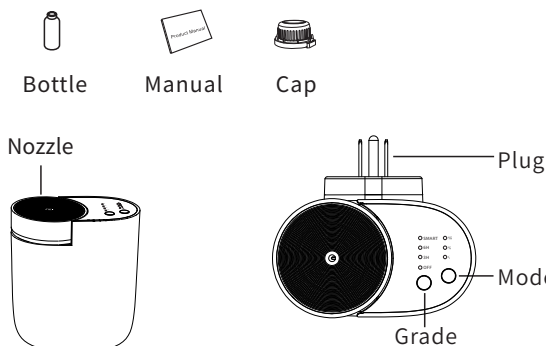
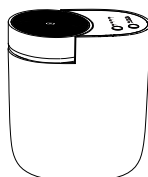
iOS system

If the QR code cannot be scanned, please search for "Scent Marketing" in Google play or APP store.



## 01 Specification

- Model : A323
- Size : 110\*101\*60mm
- Bottle : 60ml
- Power : 1.5W
- Input : AC100V-240V 50/60Hz
- Coverage : 30m<sup>2</sup>/90m<sup>3</sup>/3100ft<sup>3</sup>
- N.W. : 0.28kg



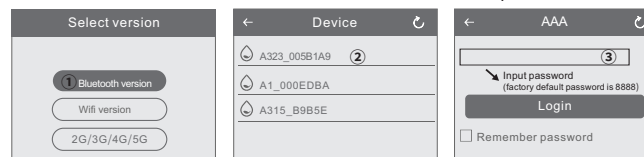
## 02 Bluetooth instruction

### Where to get the app:

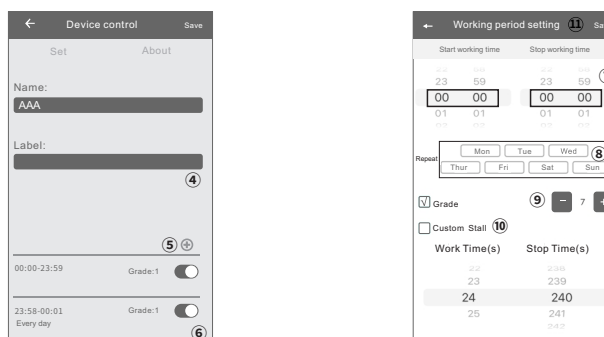
Please search for "Scent Marketing" in Google play or APP store.

### Note:

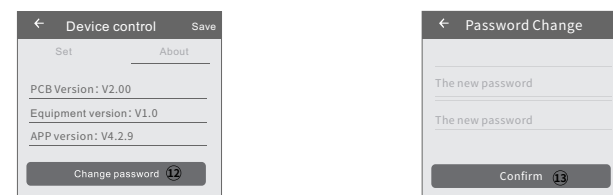
Make sure that the location function of Bluetooth and mobile phone is enabled.



1. Open the scent marketing app and select Bluetooth.
2. Select your device.
3. Enter the default password 8888 and press Login.



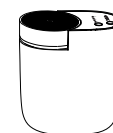
4. On the Device Control page; You can change your device name and label information of your scent diffuser.
5. Different schedules by pressing the "+" button. To delete a schedule, swipe left.
6. Press the toggle button to turn on/off any schedule.
7. On the "Working period setting" page, Set the hours of the day you want your diffuser to run by scrolling the "Start working time" and "Stop working time".
8. Select the days of the week you want your diffuser to run (all days are pre-selected).
9. Press "+" or "-" to increase or decrease the preset intensity grades (1-11. See chart for details.)
10. Check (✓) the Custom box to create a custom intensity and scroll the "Spray Time" and "Pause Time".
11. Press the "Save" button to update the Settings.



12. Press the "Password Change" to access the password change page.
15. Enter a new four-digit password, then click "Confirm".

**Note:** If you forget the password, please press the reset button to restore the factory setting. The factory settings password is 8888.

## 03 Functional analysis



### Grade button

- Short press: Cycles through scent intensity level 1→2→3→1.
- Long press (3 seconds): Resets to factory settings.
- In Bluetooth mode, all modes lights are off.

### Mode Button

- Short press: Cycles through modes: 3H-6H-Bluetooth mode-Off-3H;
- Bluetooth indicator: Lights up when Bluetooth is connected and working;
- 6H Timer Indicator: Lights up when the 6-hour timer is active and enters standby after 6 hours;
- 3H Timer Indicator: Lights up when the 3-hour timer is active and enters standby after 3 hours;
- Machine running: Blue light on; Standby: Yellow light on; Grade lights off;
- Short press Off mode: Red light on, other lights off;
- Successful Bluetooth connection: Beep sound appears and Bluetooth indicator stays on;
- Short press Off mode: Red light on, other lights off;

### Timer Function

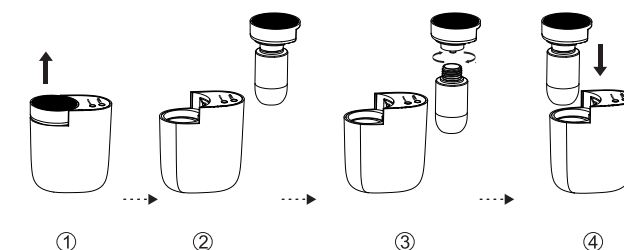
Standby timer cycles with a 24-hour period;

- 3H mode: Runs for 3 hours with a blue light, then enters standby for 21 hours with a yellow light;
- 6H mode: Runs for 6 hours with a blue light, then enters standby for 18 hours with a yellow light.

### Buzzer

- Power on: Beeps once.
- Grade button short press/mode button short press: Beeps once.
- Grade button long press for 3 seconds to restore factory settings:
- Long beep. Successful Bluetooth connection: Multiple beeps.
- Successful Bluetooth operation: Beeps once.

## 04 Installation step



1. Lift up the diffuser head and bottle to remove them;
2. Twist off the diffuser head and bottle;
3. After replacing or adding oil, tighten the bottle and diffuser head;
4. Align and place them back in the machine, then press downwards.

## 05 Concentration and consumption

| Grade | Work time(s) | Stop time(s) | Consumption(g/h) |
|-------|--------------|--------------|------------------|
| G1    | 15s          | 120s         | 0.18             |
| G2    | 15s          | 90s          | 0.24             |
| G3    | 15s          | 60s          | 0.30             |

**Note:** 1. The above data is for reference only. If customers use essential oils with different viscosities, the oil consumption will vary;  
2. For the best diffusion effect, it's recommended to use essential oils with a viscosity below 30mPa.s. And the optimal working temperature is 25°C.

## 06 ISED Statement

English: This device contains licence-exempt transmitter(s)/receiver(s) that comply with Innovation, Science and Economic Development Canada's licence-exempt RSS(s). Operation is subject to the following two conditions:

- (1) This device may not cause interference.
- (2) This device must accept any interference, including interference that may cause undesired operation of the device.

The digital apparatus complies with Canadian CAN ICES - 3 (B)/NMB - 3(B).

French: Cet appareil contient des émetteurs/récepteurs exempts de licence qui sont conformes aux RSS exemptés de licence d'Innovation, Sciences et Développement économique Canada.

L'exploitation est soumise aux deux conditions suivantes :

- (1) Cet appareil ne doit pas provoquer d'interférences.
- (2) Cet appareil doit accepter toute interférence, y compris les interférences susceptibles de provoquer un fonctionnement indésirable de l'appareil.

L'appareil numérique du ciem conforme canadien peut - 3 (b) / nmb - 3 (b).

This device meets the exemption from the routine evaluation limits in section 2.5 of RSS 102 and compliance with RSS 102 RF exposure, users can obtain Canadian information on RF exposure and compliance.

cet appareil est conforme à l'exemption des limites d'évaluation courante dans la section 2.5 du cnr - 102 et conformité avec rss 102 de l'exposition aux rf, les utilisateurs peuvent obtenir des données canadiennes sur l'exposition aux champs rf et la conformité.

This equipment complies with Canada radiation exposure limits set forth for an uncontrolled environment.

Cet équipement est conforme aux limites d'exposition aux rayonnements du Canada établies pour un environnement non contrôlé.

This equipment should be installed and operated with minimum distance 20cm between the radiator & your body.

Cet équipement doit être installé et utilisé à une distance minimale de 20 cm entre le radiateur et votre corps.

## 07 FCC Statement

This device complies with part 15 of the FCC Rules. Operation is subject to the following two conditions:

- (1) This device may not cause harmful interference, and
- (2) this device must accept any interference received, including interference that may cause undesired operation.

This equipment has been tested and found to comply with the limits for a Class B digital device, pursuant to part 15 of the FCC Rules. These limits are designed to provide reasonable protection against harmful interference in a residential installation. This equipment generates, uses and can radiate radio frequency energy and, if not installed and used in accordance with the instructions, may cause harmful interference to radio communications. However, there is no guarantee that interference will not occur in a particular installation. If this equipment does cause harmful interference to radio or television reception, which can be determined by turning the equipment off and on, the user is encouraged to try to correct the interference by one or more of the following measures:

- Reorient or relocate the receiving antenna.
- Increase the separation between the equipment and receiver.
- Connect the equipment into an outlet on a circuit different from that to which the receiver is connected.
- Consult the dealer or an experienced radio/TV technician for help.

**FCC Caution:** Any changes or modifications not expressly approved by the party responsible for compliance could void the user's authority to operate the equipment. This transmitter must not be co-located or operating in conjunction with any other antenna or transmitter.  
Not applicable

### RF Exposure

This device complies with FCC radiation exposure limits set forth for an uncontrolled environment. This equipment should be installed and operated with minimum distance 20cm between the radiator & your body.

## 08 ⚠ Warning

1. Please keep the machine vertical. Tilt or lie flatly may cause the oil overflow. The efficiency of the machine may be affected.
2. Shall not modify, disassemble or repair the machine. If any failure happens to the machine, please contact our technical personnel.
3. Do not use this product under high humidity and high pressure conditions.
4. It is better to screw the machine on the wall than just stick it via tape; otherwise, the machine will be easy to fall down.



## 09 Troubleshooting

Before asking to have the machine repaired, please try to diagnose the problem first following to below instructions.

| Symptom          | Remedy  |
|------------------|---|
| Does not diffuse | - Whether the machine is in "not working period". If yes, it won't spray.<br>- Check whether the air pump is damaged. If yes, replace it with a new one.  |
| Spray little     | - Check whether the gasket is damaged or loose. Please adjust it or replace it with a new one.<br>- Check whether the atomized core is plugged; clear it with alcohol or replace it with a new one  |
| Oil spill        | - Check whether the atomized head is damaged  |
| Oil overflow     | - Check whether the oil bottle is loose, please install it correctly<br>- Check whether the gasket of the atomized head is damaged; if yes, please replace it with another one.<br>- Please keep the machine vertical; Tilt or lie flatly will cause the oil overflow |

## 10 Equipment cleaning

**The machine needs to be cleaned when below situations happen:**

1. You're about to change to another kind of essential oil;
2. The atomization volume becomes weak.

### Cleaning steps:

1. Find a clean bottle and fill it with industrial alcohol;
2. Install this bottle to the machine and turn the machine on. Let it work for 5-10 minutes;
3. Turn off the electric, finish the cleaning.