

## 1. Antenna Description:

Antenna type	Metal antenna
Model	H96Max S905L3-WIFI
Frequency range	2400-2500MHz
Manufacturer	Shenzhen Haochuangyi Technology Co.,Ltd
Address	1101, Building 6, Changyi Industrial Plant, No.1 Lirong Road, Xinshi Community, Dalang Street, Longhua District, Shenzhen, China
ANT Peak Gain	2.16 dBi

## 2. Antenna Photo:



### 3. Test Equipment & Conditions

#### 3.1 Test instrument

VSWR is tested using Agilent E5071B connected to a hand mechanism, and the status is free space.

#### 3.2 Test environment and methods

Dark room specifications: ETS-743

TD-SCDMA test equipment: StarPoint SP6010/Agilent 8960

LTE-TDD/FDD-SCDMA test equipment: StarPoint SP8011/CMW500

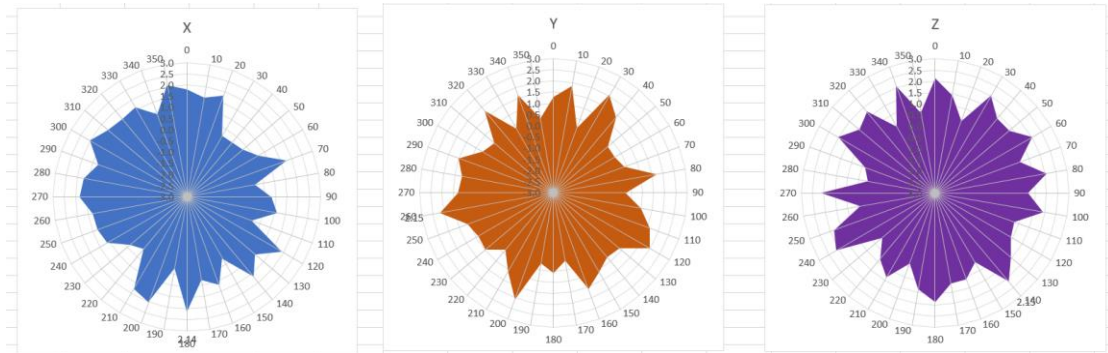
WCDMA/GSM/CDMA test equipment: Agilent 8960

Passive efficiency testing equipment: Agilent Technologies E5071B

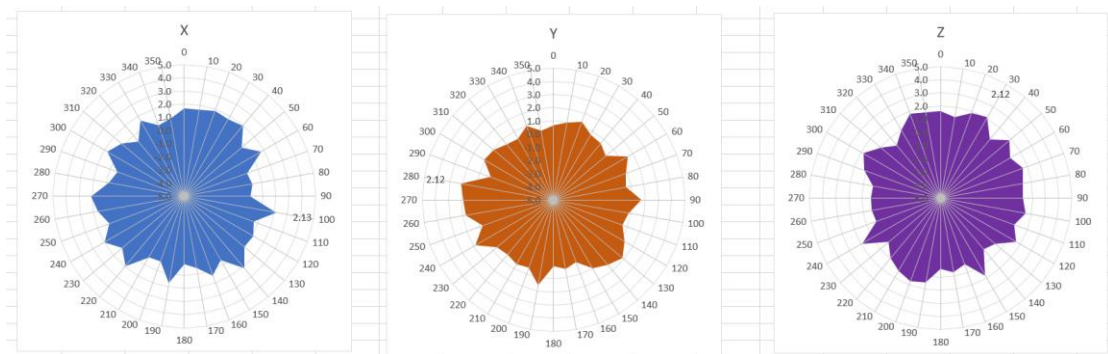


# 4 . Antenna Radiation Pattern

## 2400MHz



## 2450MHz



## 2500MHz

