

Wireless
Audio Receiver

Model: MI-11



User Manual



Introduction

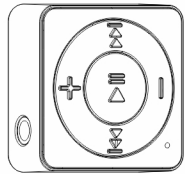
Thank you for purchasing our Wireless Audio Receiver. Please read this user manual before use. For assistance or quality concerns, contact us for exchanges or refunds. Due to environmental reasons, we kindly request that you do not return the receiver as it cannot be resold.

support@mipeaceaudio.com www.mipeaceaudio.com

Specifications

Profile Support	A2DP / AVRCP / SPP / HFP
Signal Range	32 Feet / 10 Meters
Connectivity Version	5.3
Connection ID	Mipeace
Charging Method	Type-C
Charging Time	1.5-2 hours
Talk Time	6.5 hours (at 70% volume)
Music Time	6-8 hours (at 70% volume)
Frequency Response	20Hz-20KHz
Weight	0.38 oz (10.5 g)
Dimensions	30 x 30 x 18 mm (1.18 x 1.18 x 0.71 inches)

Package Contents



1x Wireless Audio Receiver



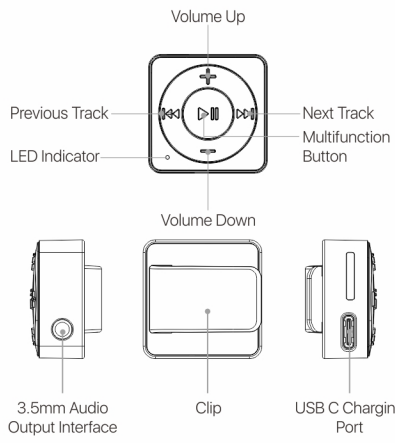
1x USB C Charging Cable



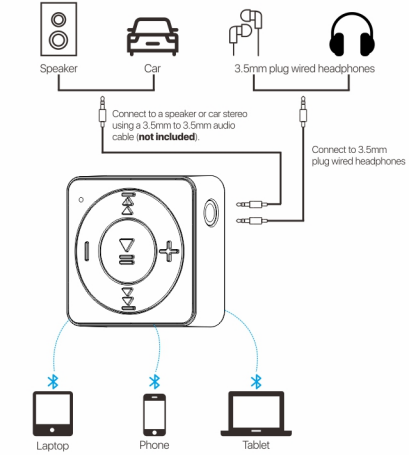
User Manual

1x User Manual

Product Overview



How To Use



Operating Instructions

1. Powering On
Press and hold the multifunction button for 3 seconds, the blue light will flashes.

2. Powering Off
Press and hold the multifunction button for 5 seconds, the red light will flashes.

Please charge it before the first use and at least once every two months to keep the battery fresh and capable of holding a full charge.

- 3. Charging**
- When the LED flashes red, the battery is low and needs recharging.
 - Connect the USB charging cable to the receiver and plug the other end into a USB port on a PC or a DC 5V/1A charger.
 - It will take about 1.5 hours for a full charge. The LED will illuminate solid red during charging and turn off when complete.

4. Pairing and Connection

- Plug your 3.5mm wired headphones into the 3.5mm port on the receiver. Alternatively, connect the receiver to non-Bluetooth speakers or a car stereo system using a 3.5mm to 3.5mm audio cable.
- Turn on the receiver and enter pairing mode (the indicator light will flash blue and red alternately).
- Turn on Bluetooth on your phone, search for the Bluetooth ID "Mipeace", and select it. Wait until you hear a prompt voice saying "connected," indicating that the pairing is finished.

5. Calling

Function	Operation
Answer Incoming call	Short press the MFB button once
Hang up Incoming call	Short press the MFB button once
Reject incoming call	Press and hold the MFB button for about 3 seconds
Activate the voice assistant	Press the MFB button three times

6. Play Music

Function	Operation
Increase volume	Press the "+" button
Decrease volume	Press the "-" button
Previous track	Press and hold the "◀◀" button
Next track	Press and hold the "▶▶" button
Pause playing	Press the MFB button
Resume playing	Press the MFB button

7. LED Indications

Status	LED Indication
Power On	Blue LED flashes twice
Power Off	Red LED flashes twice
Low Battery	Flashes red
Charging	Solid red
Charging Complete	Red LED off
Bluetooth Pairing Mode	Red and blue LED flash alternately

Maintenance

Read the following recommendations before using the receiver:

- Keep the receiver away from liquid, moisture, and humidity to avoid damaging the internal circuitry.
- Avoid using abrasive cleaning solvents to clean the receiver.
- Do not expose the receiver to extreme temperatures, as this can shorten the life of the device and damage the battery.
- Do not dispose of the receiver in fire to prevent explosions.
- Avoid contact with sharp objects to prevent scratches and damage.
- Do not drop the receiver to protect the internal circuitry.
- Do not disassemble the receiver unless you are a professional.
- Store the receiver in a dry, temperature-controlled place when not in use for an extended period.

FAQ

- 1. What should you do if the receiver won't turn on or off?**
Please charge the receiver for a few times.
- 2. What should you do if the receiver won't pair or connect?**
a. Ensure the Bluetooth device is within 10 meters (33 feet).
b. Make sure the receiver is in pairing mode.
- 3. What should you do if there is noise, delay, or echo during phone calls?**
Clip the receiver to your collar, keeping it within 30 centimeters (12 inches) of your mouth.
- 4. Can it work with a TV or wireless headphones?**
It is a wireless audio receiver that receives Bluetooth signals but does not transmit. It does not support multipoint connections.

WARRANTY

The warranty covers normal use only. Man-made damages from unsuitable power sources, devices, or improper use, and damages from non-approved repairs, misuse, or improper installation void the warranty. Shipping fees are not included.



FCC Statement

This equipment has been tested and found to comply with the limits for a Class B digital device, pursuant to part 15 of the FCC rules. These limits are designed to provide reasonable protection against harmful interference in a residential installation. This equipment generates, uses and can radiate radio frequency energy and, if not installed and used in accordance with the instructions, may cause harmful interference to radio communications. However, there is no guarantee that interference will not occur in a particular installation. If this equipment does cause harmful interference to radio or television reception, which can be determined by turning the equipment off and on, the user is encouraged to try to correct the interference by one or more of the following measures:

- Reorient or relocate the receiving antenna.
- Increase the separation between the equipment and receiver.
- Connect the equipment into an outlet on a circuit different from that to which the receiver is connected.
- Consult the dealer or an experienced radio/TV technician for help.

FCC Statement

To assure continued compliance, any changes or modifications not expressly approved by the party. Responsible for compliance could void the user's authority to operate this equipment. (Example- use only shielded interface cables when connecting to computer or peripheral devices).

This equipment complies with Part 15 of the FCC Rules. Operation is subject to the following two conditions:
(1) This device may not cause harmful interference, and
(2) This device must accept any interference received, including interference that may cause undesired operation.

RF warning statement:
The device has been evaluated to meet general RF exposure requirement.
The device can be used in portable exposure condition without restriction.