



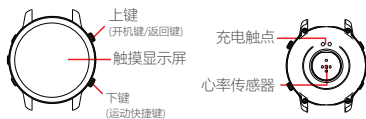
KUMI K6智能手表 WATCH 使用指南

v1.0

您好，感谢您选用我们的智能健康手表。在第一次使用本设备时为了方便您使用，请仔细阅读说明书，并按照说明书的步骤操作。

手表快速使用说明

部件介绍



注：长按上按键手表即可开机

手表充电与激活

首次使用手表之前需要充电激活，使用配备的磁吸充电器吸附到手表表面的金属点。充电器另一端接入USB充电头或电脑USB接口即可。



安装手表APP

扫描以下二维码或进入各大应用市场下载并安装“KUMIFit”

设备要求 ios 8.0及以上/Android 4.4及以上，支持蓝牙4.0.



打开手机客户端设置个人信息



切换至“设备”页面，点击绑定设备

在扫描到的设备列表点击你的设备



绑定完成

主要功能界面

主界面/表盘

在主界面长按触摸屏进入，左右滑动切换，单击确定。表盘有3种风格。



计步/距离/卡路里

一天中随时查看行走的步数，行走的距离和消耗的卡路里。可及时同步到APP中，查看运动数据



心率界面

切换至心率测试界面即可进入心率实时监测，测量数据可及时同步到APP中，并有测试报告



血压界面

切换至血压界面即可进入血压实时监测，测量数据可及时同步到APP中，并有测试报告。

注：测试结果仅供参考，不能作为医疗数据使用



血氧界面

切换至血氧测试界面即可进入血氧实时检测，测试结果直接显示在手表界面



天气界面

天气界面会显示当前的天气。天气信息需要连接APP后才可以获取数据，如果长时间断开连接，天气信息将无法更新



秒表

点击秒表图标即可进入秒表功能。
右滑退出



消息界面

在主界面上滑进入消息界面,点击消息图标即可查看消息, 单击翻页, 查看完消息即可退出或右滑退出



运动界面

在主界面按下键即可进入运动界面,右滑返回主界面, 点击运动图标即可进入运动模式检测。跑步, 骑行, 游泳, 跳绳, 乒乓球, 羽毛球, 网球

在主界面按下按键进入, 上下滑动切换, 单击开始计算, 右滑退出当前运动模式



设置功能界面

在主界面向下滑动进入设置功能界面,可选择“查找手机”“亮度调节”“关于”“设置”等选项,点击图标可进入相应功能设置



查找手机界面

连接状态下，点击“查找”图标进入，单击手机会发出震动或铃声提醒

亮度调节界面

点击亮度调节图标即可自由选择屏幕亮度

关于界面

点击关于图标，显示机器型号，蓝牙地址后四位

还原界面

点击还原图标进入，即可还原手环

关机界面

点击关机页面进入，即可关机

其他功能提醒

提醒功能需要在APP端设置开启提醒开关，并保持手机与手环在蓝牙连接成功的状态，来消息是震动提醒

睡眠监测功能

入睡时，手表会自动判断进入睡眠检测模式，自动检测您整晚深睡/浅睡/清醒时长，计算您的睡眠质量，睡眠数据暂时只支持APP端查看。

注意：佩戴手表入睡才会有睡眠数据

注意事项

- 1.禁止使用充电电压大于5V,充电电流大于2A的适配器充电时
- 2.禁止在有水滴的情况下充电
- 3.本产品为电子产品,不作为医疗参考,测量数据仅供参考
- 4.

血压测试方法

测试前需要安静的休息5分钟以上,测试前2个小时不要进食,吸烟,服药和饮咖啡因,测试过程中采取舒适静止的坐姿,保持平稳的心态,禁止讲话.请确保手环与心脏同高(如右图)



常见问题

1.血压测试为何不准

血压测试受外界环境及个人肤色等影响,血压监测只作为监测血压高低变化无法真正测试或监测高血压患者血压,不可作为医疗器械,测试数据不能作为医疗数据,仅供参考

2.为何无法推送来电信息或内容

2.1:安卓QQ微信提醒服务权限获取用户首次打开QQ微信提醒开关的时候,APP会获取相应的权限.勾选APP中的程序使其获得对应的权限

2.2:iOS(来电,短信,QQ,微信)提醒的开关时,系统会自动弹出配对请求,用户只需选择配对即可

法律声明

- 版权所有 © 库觅科技有限公司 2023,保留一切权利。
- 本公司有权随时修改本说明书中的任何信息，而无需通知任何第三方，且不对此修改行为向第三方承担任何责任；
- 非经本公司书面同意，任何单位和个人不得擅自摘编、复制或利用其它方式使用本手册内容，并不得以任何形式传播；
- 本指南仅供参考，不构成任何形式的承诺，产品（包括但不限于颜色、大小、屏幕显示等）请以实物为准。

保修说明

我司产品遵循国家《产品质量法》提供三包服务，只限于在正常使用情况下的三包有效保修期内，由于产品本身质量问题引起的非人为损坏的故障，凭发票和本三包凭证按照三包规定将享受下列三包服务：

- 自购买之日起7日内，主机出现性能故障（非人为造成的性能故障）及外观无任何人人为的明显痕迹，不影响二次销售，可选择退货、换货或者修理；
- 自购买之日起第8日至第15日内，主机出现性能故障（非人为造成的性能故障）及外观无任何人人为的明显痕迹，不影响二次销售，可选择换货或修理；
- 自购买之日起一年内，主机出现性能故障（非人为造成的性能故障），可享受免费修理服务；

属于下列情况之一（但不限于下列情况），不实行三包：

- 三包凭证上的内容与商品实物标识不符或有涂改的；
- 非承担三包的修理者拆动造成损坏的；
- 未按产品使用说明书要求使用、维护、保养而造成损坏的；
- 无三包凭证及有效发票，且不能够证明该产品在三包有效期内的；
- 超过三包有效期的；

- 由于使用者使用不当（如坠落、挤压、浸液等）而造成损坏的；
- 使用非库范科技有限公司原厂配件而导致主机发生故障的。

温馨提示：如果有任何疑问，请致电库范科技有限公司客服热线：
400-0222-503,或者向当地授权服务网点或经销商咨询。

消费者若使用电源适配器供电，则应购买配套使用获得CCC认证并满足标准要求
的电源适配器。

保修卡

产品型号			SN号码	
购机日期				
用户信息	姓名			
	地址			
	电话			
	发票号码	(加盖公章)		
销售单位信息	名称			
	地址			
	电话			



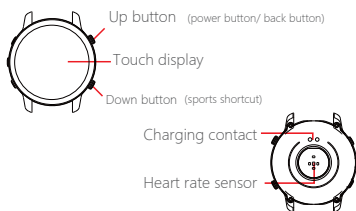
KUMI K6 SMART WATCH

OPERATING GUIDE

v1.0

Quick use instructions for watches

Component introduction



Note: Press and hold the button to turn on the watch.

Instruction for Charging

Charging the device to active before the first time using; To charge your device, plug the charging cable into the adapter or USB port on your computer

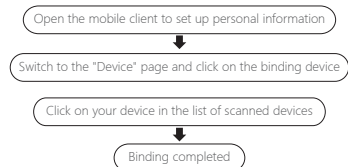


Install bracelet APP

Scan the following QR codes or go to the major APP Stores to download and install the APP "KUMIFit"



Device requirements: iOS 9.0 and above; Android 4.4 and above.
Bluetooth 4.0 is supported.



Main function interface

Main interface / dial

Press and hold the touch screen on the main interface to enter.
Slide left and right to switch and click OK. The dial has 3 styles.



Step/distance/calorie

View the number of steps taken at any time of the day, walking distance and calories burned. Can be synchronized to the app in time to view the sports data.



Heart rate interface

Switch to the heart rate test interface to enter the heart rate real time Monitoring, measurement data can be synchronized to the APP in time.And have a test report



Blood pressure interface

Switch to the blood pressure interface to enter the blood pressure real-time monitoring.Measurement data can be synchronized to the APP in time, and measuredTest report

Note: Test results are for reference only and cannot be used as medical data



Blood oxygen interface

Switch to the blood oxygen test interface to enter the real-time detection of blood oxygen.Test results are displayed directly on the bracelet interface



Weather interface

The weather interface will display the current weather,Weather information needs to be connected to the app.Can get data, if disconnected for a long time, weather letterThe information will not be updated



Stopwatch

Click the stopwatch icon to enter the stopwatch function. Swipe right



Message interface

On the main interface, slide into the message interface and click the message icon to view the message. Click to turn the page, view the message to exit or right to exit



Sports interface

Press the button on the main interface to enter the motion interface, right slide back to the main interface. Click on the motion map. The target can enter the motion mode detection, Running, cycling, swimming, skipping, table tennis, badminton, tennis

Press the button on the main interface to enter, slide up and down to switch, click to start calculation, right slide to exit the current Sports mode



Setting function interface

In the main interface, slide down to enter the setting function interface, you can choose "Find phone" "Brightness adjustment" "About" "Settings" item. Click the icon to enter the corresponding function settings



Find the phone interface

In the connected state, click the "Find" icon to enter, click, the phone will Give a vibrate or ringtone reminder

Brightness adjustment interface

You can freely choose the screen brightness by clicking the brightness adjustment icon

About the interface

Click on the icon to display the model number of the machine and the last four digits of the Bluetooth address

Restore interface

Click the restore icon to enter, you can restore the bracelet.

Shutdown interface

Click on the shutdown page to enter, you can shut down

Other feature reminders

The reminder function needs to set the open reminder switch on the APP side, and keep the mobile phone and the bracelet in the Bluetooth connection. In the successful state, the message is a vibration reminder

Sleep monitoring function

When you fall asleep, the bracelet will automatically judge to enter the sleep detection mode, automatically detecting your deep sleep / shallow all night Sleep/wake up time, calculate your sleep quality; sleep data only supports APP side view

Note: Sleep data will only be available when you wear the bracelet to sleep

Precautions

1: It is forbidden to use an adapter with a charging voltage greater than 5V and a charging current greater than 2A. The charging time is 2-3 hours.

2: Do not charge in case of water stains

3: This product is an electronic product, not for medical reference, measurement data is for reference only.

4: Blood pressure test method

Quiet rest for more than 5 minutes before the test, do not enter 2 hours before the test Food, smoking, taking medicine and drinking caffeine; testing process Take a comfortable, restful sitting position and keep it flat A steady state of mind is forbidden to speak. Please The bracelet is at the same height as the heart (as shown on the right)



common problem

1: Why is the blood pressure test not allowed?

The blood pressure test is affected by the external environment and the skin color of the individual. Blood pressure monitoring is only used to monitor changes in blood pressure. Can not really test or monitor the blood pressure of patients with hypertension, can not be used as a medical device, test data can not be used as Medical data, for reference only.

2: Why can't I push caller information or content?

2.1: Android QQ WeChat reminder service permission to

obtain When the user opens the QQ WeChat reminder switch for the first time, the app will get the corresponding permission and check the APP. Program to get the corresponding permissions

2.2: IOS (incoming call, SMS, QQ, WeChat) reminder switch, the system will automatically pop up the pairing request, users only need to choose to pair

LEGAL STATEMENT

- Copyright © KUMI Technology Co., Ltd. 2023 All rights reserved
- The company has the right to modify any information in this manual at any time without notifying any third party, and will not assume any responsibility to the third party for this modification
- Without the written consent of the company, no unit or individual shall extract, copy or use the contents of this manual in other ways without authorization, and shall not disseminate it in any form
- This guide is for reference only and does not constitute a commitment in any form. Products (including but not limited to color, size screen display, etc.) shall be subject to the actual object

FCC WARNING

This device complies with part 15 of the FCC Rules. Operation is subject to the following two conditions: (1) this device may not cause harmful interference, and (2) this device must accept any interference received, including interference that may cause undesired operation. Any changes or modifications not expressly approved by the party responsible for compliance could void the user's authority to operate the equipment.

NOTE: This equipment has been tested and found to comply with the limits for a Class B digital device, pursuant to Part 15 of the FCC Rules. These limits are designed to provide reasonable protection against harmful interference in a residential installation. This equipment generates, uses and can radiate radio frequency energy and, if not installed and used in accordance with the instructions, may cause harmful interference to radio communications. However, there is no guarantee that interference will not occur in a particular installation.

If this equipment does cause harmful interference to radio or television reception, which can be determined by turning the equipment off and on, the user is encouraged to try to correct the interference by one or more of the following measures:

- Reorient or relocate the receiving antenna.
- Increase the separation between the equipment and receiver.
- Connect the equipment into an outlet on a circuit different from that to which the receiver is connected.
- Consult the dealer or an experienced radio/TV technician for help.

The device has been evaluated to meet general RF exposure requirement. The device can be used in portable exposure condition without restriction

FCC ID: 2A2L4-KUMIK6