



Shenzhen Huaxia Testing Technology Co., Ltd

1F., Block A of Tongsheng Technology Building, Huahui Road, Dalang Street, Longhua District, Shenzhen, China

Telephone: +86-755-26648640

Fax: +86-755-26648637

Website: www.cqa-cert.com

Report Template Version: V03

Report Template Revision Date: Mar.1st, 2017

Test Report

Report No. : CQASZ20250300711E-01
Applicant: Shenzhen PioCreat 3d Technology Co., Ltd.
Address of Applicant: 3rd Floor, Building 1, No. 156 Huawang Road, Langkou Community, Dalang Street, Longhua District, Shenzhen, China
Equipment Under Test (EUT):
Product: Auto Feed Unit
Model No.: AFU
Test Model No.: AFU
Brand Name: N/A
FCC ID: 2A2DOAFU
Standards: 47 CFR Part 15, Subpart C
Date of Receipt: 2025-3-31
Date of Test: 2025-3-31 to 2025-5-15
Date of Issue: 2025-5-30
Test Result : **PASS***

Tested By: Lewis Zhou
(Lewis Zhou)

Reviewed By: Timo Lei
(Timo Lei)

Approved By: Jack Ai
(Jack Ai)



* In the configuration tested, the EUT complied with the standards specified above.

The test report is effective only with both signature and specialized stamp, The result(s) shown in this report refer only to the sample(s) tested. Without written approval of COA, this report can't be reproduced except in full.

1 Version

Revision History Of Report

Report No.	Version	Description	Issue Date
CQASZ20250300711E-01	Rev.01	Initial report	2025-5-30

2 Contents

	Page
1 VERSION	2
2 CONTENTS	3
3 TEST SUMMARY	4
4 GENERAL INFORMATION	5
4.1 CLIENT INFORMATION	5
4.2 GENERAL DESCRIPTION OF E.U.T.	5
4.3 TEST ENVIRONMENT	6
4.4 DESCRIPTION OF SUPPORT UNITS	6
4.5 STATEMENT OF THE MEASUREMENT UNCERTAINTY	7
4.6 TEST LOCATION	8
4.7 TEST FACILITY	8
4.8 EQUIPMENT LIST	9
5 TEST RESULT AND MEASUREMENT DATA	10
5.1 ANTENNA REQUIREMENT	10
5.2 ELECTRIC FIELD STRENGTH OF FUNDAMENTAL AND OUTSIDE THE ALLOCATED BANDS	11
5.3 RADIATED EMISSIONS	14
5.4 FREQUENCY TOLERANCE	20
5.5 OCCUPIED BANDWIDTH	22
6 PHOTOGRAPHS - EUT TEST SETUP	28
6.1 RADIATED EMISSION	28
7 PHOTOGRAPHS - EUT CONSTRUCTIONAL DETAILS	30

3 Test Summary

Test Item	Test Requirement	Test Method	Result
Antenna Requirement	47 CFR Part 15, Subpart C Section 15.203	ANSI C63.10 2013	Pass
Conducted Emission (150KHz to 30MHz)	47 CFR Part 15, Subpart C Section 15.207	ANSI C63.10 2013 Section 6.2	Pass
Electric Field Strength of Fundamental and Outside the Allocated bands	47 CFR Part 15, Subpart C Section 15.225(a)/(b)/(c)	ANSI C63.10 2013 Section 6.10	Pass
Radiated Emission	47 CFR Part 15, Subpart C Section 15.225(d)/15.209	ANSI C63.10 2013 Section 6.4 & 6.5	Pass
Frequency Tolerance	47 CFR Part 15, Subpart C Section 15.225(e)	ANSI C63.10 2013 Section 6.8	Pass
Occupied Bandwidth	47 CFR Part 15, Subpart C Section 15.215	ANSI C63.10 2013 Section 6.9	Pass

4 General Information

4.1 Client Information

Applicant:	Shenzhen PioCreat 3d Technology Co., Ltd.
Address of Applicant:	3rd Floor, Building 1, No. 156 Huawang Road, Langkou Community, Dalang Street, Longhua District, Shenzhen, China
Manufacturer:	Shenzhen PioCreat 3d Technology Co., Ltd.
Address of Manufacturer:	3rd Floor, Building 1, No. 156 Huawang Road, Langkou Community, Dalang Street, Longhua District, Shenzhen, China
Factory:	Shenzhen PioCreat 3d Technology Co., Ltd.
Address of Factory:	3rd Floor, Building 1, No. 156 Huawang Road, Langkou Community, Dalang Street, Longhua District, Shenzhen, China

4.2 General Description of E.U.T.

Product Name:	Auto Feed Unit
Model No.:	AFU
Test Model No.:	AFU
Trade Mark:	N/A
Software Version:	V2.1
Hardware Version:	V2.0
Operation Frequency:	13.56MHz
Modulation Type:	ASK
Product Type:	<input checked="" type="checkbox"/> Mobile <input type="checkbox"/> Portable
Antenna Type:	FPC antenna
Antenna Gain:	0dBi
Power Supply:	Power supply adapter

4.3 Test Environment

Temperature:	25.3 °C
Humidity:	55 % RH
Atmospheric Pressure:	1009mbar
Test mode:	Transmitting mode

4.4 Description of Support Units

The EUT has been tested with associated equipment below.

Description	Manufacturer	Model No.	Remark	Supplied
/	/	/	/	/

4.5 Statement of the measurement uncertainty

The data and results referenced in this document are true and accurate.

The reader is cautioned that there may be errors within the calibration limits of the equipment and facilities.

The measurement uncertainty was calculated for all measurements listed in this test report acc. to CISPR 16 - 4 „Specification for radio disturbance and immunity measuring apparatus and methods – Part 4: Uncertainty in EMC Measurements“ and is documented in the **Shenzhen Huaxia Testing Technology Co., Ltd.** quality system acc. to DIN EN ISO/IEC 17025.

Furthermore, component and process variability of devices similar to that tested may result in additional deviation. The manufacturer has the sole responsibility of continued compliance of the device.

Hereafter the best measurement capability for CQA laboratory is reported:

No.	Item	Uncertainty	Notes
1	Radiated Emission (Below 1GHz)	±5.12dB	(1)
2	Radiated Emission (Above 1GHz)	±4.60dB	(1)
3	Conducted Disturbance (0.15~30MHz)	±3.34dB	(1)
4	Radio Frequency	3×10^{-8}	(1)
5	Duty cycle	0.6 %.	(1)
6	Occupied Bandwidth	1.1%	(1)
7	RF conducted power	0.86dB	(1)
8	RF power density	0.74	(1)
9	Conducted Spurious emissions	0.86dB	(1)
10	Temperature test	0.8°C	(1)
11	Humidity test	2.0%	(1)
12	Supply voltages	0.5 %.	(1)
13	time	0.6 %.	(1)
14	Frequency Error	5.5 Hz	(1)

(1) This uncertainty represents an expanded uncertainty expressed at approximately the 95% confidence level using a coverage factor of k=2.

4.6 Test Location

Shenzhen Huaxia Testing Technology Co., Ltd.

1F., Block A of Tongsheng Technology Building, Huahui Road, Dalang Street, Longhua District, Shenzhen, China

4.7 Test Facility

- **A2LA (Certificate No. 4742.01)**

Shenzhen Huaxia Testing Technology Co., Ltd., Shenzhen EMC Laboratory is accredited by the American Association for Laboratory Accreditation(A2LA). Certificate No. 4742.01.

- **FCC Registration No.: 522263**

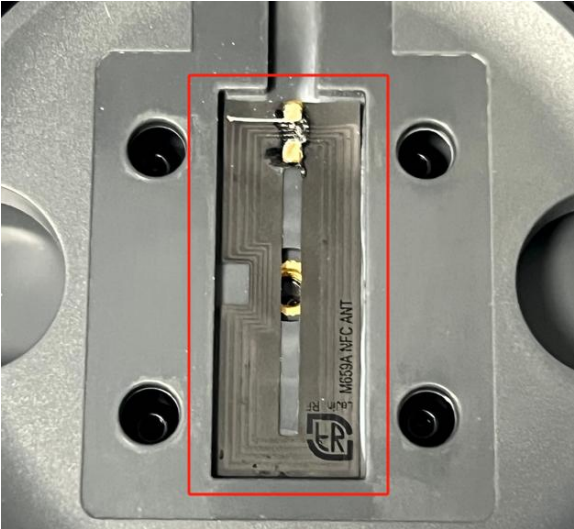
Shenzhen Huaxia Testing Technology Co., Ltd., Shenzhen EMC Laboratory has been registered and fully described in a report filed with the (FCC) Federal Communications Commission. The acceptance letter from the FCC is maintained in our files. Registration No.:522263

4.8 Equipment List

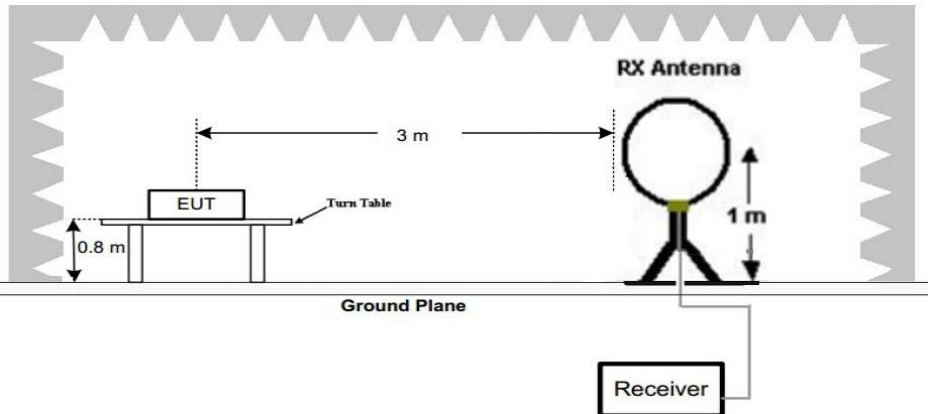
Test Equipment	Manufacturer	Model No.	Instrument No.	Calibration Date	Calibration Due Date
EMI Test Receiver	R&S	ESR7	CQA-005	2024/9/2	2025/9/1
Spectrum analyzer	R&S	FSU26	CQA-038	2024/9/2	2025/9/1
Preamplifier	MITEQ	AFS4-00010300-18-10P-4	CQA-035	2024/9/2	2025/9/1
Preamplifier	MITEQ	AMF-6D-02001800-29-20P	CQA-036	2023/11/01	2026/10/31
Loop antenna	Schwarzbeck	FMZB1516	CQA-087	2023/9/7	2026/9/6
Bilog Antenna	R&S	HL562	CQA-011	2023/11/01	2026/10/31
Coaxial Cable (Below 1GHz)	CQA	N/A	C020	2023/11/01	2026/10/31
EMI Test Receiver	R&S	ESPI3	CQA-013	2024/9/2	2025/9/1
LISN	R&S	ENV216	CQA-003	2024/9/2	2025/9/1
Coaxial cable	CQA	N/A	CQA-C009	2024/9/2	2025/9/1
high-low temperature chamber	Auchno	OJN-9606	CQA-CB2	2024/9/2	2025/9/1
DC power	KEYSIGHT	E3631A	CQA-028	2024/9/2	2025/9/1

5 Test Result and Measurement Data

5.1 Antenna Requirement

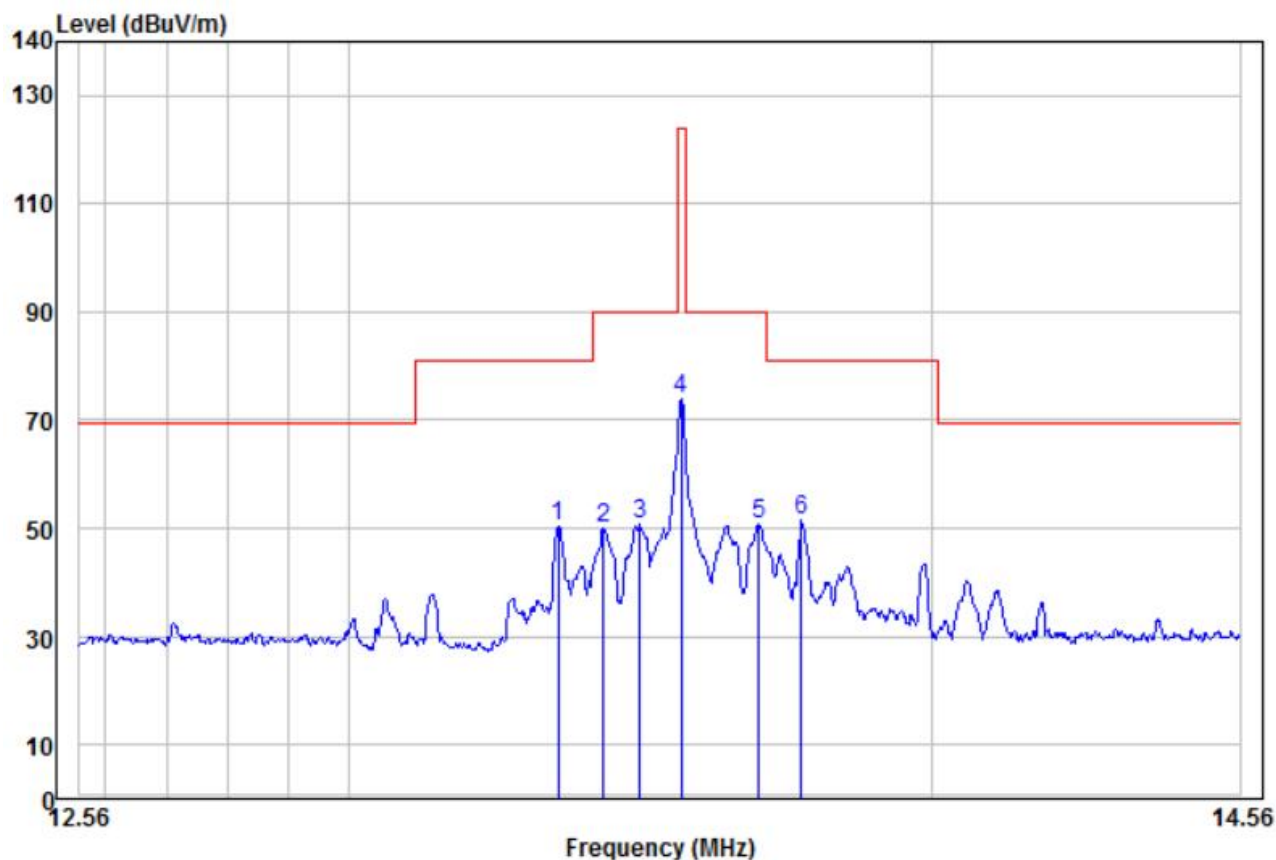
Standard requirement:	47 CFR Part15 C Section 15.203
15.203 requirement:	An intentional radiator shall be designed to ensure that no antenna other than that furnished by the responsible party shall be used with the device. The use of a permanently attached antenna or of an antenna that uses a unique coupling to the intentional radiator, the manufacturer may design the unit so that a broken antenna can be replaced by the user, but the use of a standard antenna jack or electrical connector is prohibited.
EUT Antenna:	
The antenna is FPC antenna. The best case gain of the antenna is 0 dBi.	

5.2 Electric Field Strength of Fundamental and Outside the Allocated bands

Test Requirement:	47 CFR Part 15, Subpart C Section 15.225(a)/(b)/(c)				
Test Method:	ANSI C63.10: 2013				
Test Site:	3m (Semi-Anechoic Chamber)				
Receiver Setup:	Frequency	Detector	RBW	VBW	Remark
	0.009MHz-0.090MHz	Peak	10kHz	30kHz	Peak
	0.009MHz-0.090MHz	Average	10kHz	30kHz	Average
	0.090MHz-0.110MHz	Quasi-peak	10kHz	30kHz	Quasi-peak
	0.110MHz-0.490MHz	Peak	10kHz	30kHz	Peak
	0.110MHz-0.490MHz	Average	10kHz	30kHz	Average
	0.490MHz -30MHz	Quasi-peak	10kHz	30kHz	Quasi-peak
Limit:	Frequency Range(MHz)	E-field Strength Limit @ 30 m (μV/m)	E-field Strength Limit @ 3 m (dBμV/m)		
	13.560 ± 0.007	15848	124		
	13.410 to 13.553 13.567 to 13.710	334	90		
	13.110 to 13.410 13.710 to 14.010	106	81		
	<p>Note: Where the limits have been defined at one distance, and a signal level measured at another, the limits have been extrapolated using the following formula: Extrapolation(dB)=40log₁₀(Measurement Distance/Specification Distance)</p>				
Test Setup:	 <p style="text-align: center;">Figure 1. Below 30MHz</p>				
Test Procedure:	<ol style="list-style-type: none"> 1. The EUT was placed on the top of a rotating table 0.8 meters above the ground at a 3 meter semi-anechoic chamber. The table was rotated 360 degrees to determine the position of the highest radiation. 2. The EUT was set 3 meters away from the interference-receiving antenna, which was mounted on the top of a variable-height antenna tower. 3. For each suspected emission, the EUT was arranged to its worst case and 				

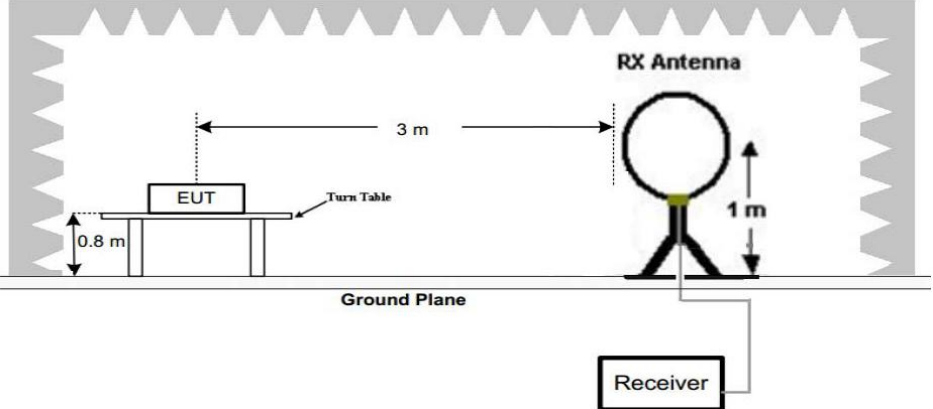
	<p>then the antenna was tuned to heights from 1 meter to 4 meters (for the test frequency of below 30MHz, the antenna was tuned to heights 1 meter) and the rotatable table was turned from 0 degrees to 360 degrees to find the maximum reading.</p> <ol style="list-style-type: none"> 5. The test-receiver system was set to Peak Detect Function and Specified Bandwidth with Maximum Hold Mode. 6. If the emission level of the EUT in peak mode was 10dB lower than the limit specified, then testing could be stopped and the peak values of the EUT would be reported. Otherwise the emissions that did not have 10dB margin would be re-tested one by one using peak, quasi-peak or average method as specified and then reported in a data sheet. 7. The radiation measurements are performed in X, Y, Z axis positioning. And found the X axis positioning which it is worse case, only the test worst case mode is recorded in the report.
Test Mode:	Transmitting mode
Test Result:	Pass

Measurement Data



	Read			Limit	Over	
Freq	Level	Factor	Level	Line	Limit	Remark
MHz	dBuV	dB/m	dBuV/m	dBuV/m	dB	
1	13.35	30.69	19.90	50.59	81.00	-30.41 Peak
2	13.43	29.98	19.90	49.88	90.00	-40.12 Peak
3	13.49	30.98	19.90	50.88	90.00	-39.12 Peak
4	13.56	53.86	19.90	73.76	124.00	-50.24 Peak
5	13.70	30.82	19.90	50.72	90.00	-39.28 Peak
6 pp	13.77	31.76	19.90	51.66	81.00	-29.34 Peak

5.3 Radiated Emissions

Test Requirement:	47 CFR Part 15C Section 15.209 and 15.225(d)				
Test Method:	ANSI C63.10: 2013				
Test Site:	3m (Semi-Anechoic Chamber)				
Receiver Setup:	Frequency	Detector	RBW	VBW	Remark
	0.009MHz-0.090MHz	Peak	10kHz	30kHz	Peak
	0.009MHz-0.090MHz	Average	10kHz	30kHz	Average
	0.090MHz-0.110MHz	Quasi-peak	10kHz	30kHz	Quasi-peak
	0.110MHz-0.490MHz	Peak	10kHz	30kHz	Peak
	0.110MHz-0.490MHz	Average	10kHz	30kHz	Average
	0.490MHz -30MHz	Quasi-peak	10kHz	30kHz	Quasi-peak
	30MHz-1GHz	Peak	100 kHz	300kHz	Peak
Limit:	Frequency	Field strength (microvolt/meter)	Limit (dBuV/m) @ 3 m	Remark	
	0.009MHz-0.490MHz	2400/F(kHz) @300m	129-94	Quasi-peak	
	0.490MHz-1.705MHz	24000/F(kHz) @30m	74-63	Quasi-peak	
	1.705MHz-30MHz	30 @30m	70	Quasi-peak	
	30MHz-88MHz	100 @3m	40.0	Quasi-peak	
	88MHz-216MHz	150 @3m	43.5	Quasi-peak	
	216MHz-960MHz	200 @3m	46.0	Quasi-peak	
	960MHz-1GHz	500 @3m	54.0	Quasi-peak	
<p>Note: Where the limits have been defined at one distance, and a signal level measured at another, the limits have been extrapolated using the following formula: $\text{Extrapolation(dB)}=40\log_{10}(\text{Measurement Distance}/\text{Specification Distance})$</p>					
Test Setup:	 <p style="text-align: center;">Figure 1. Below 30MHz</p>				

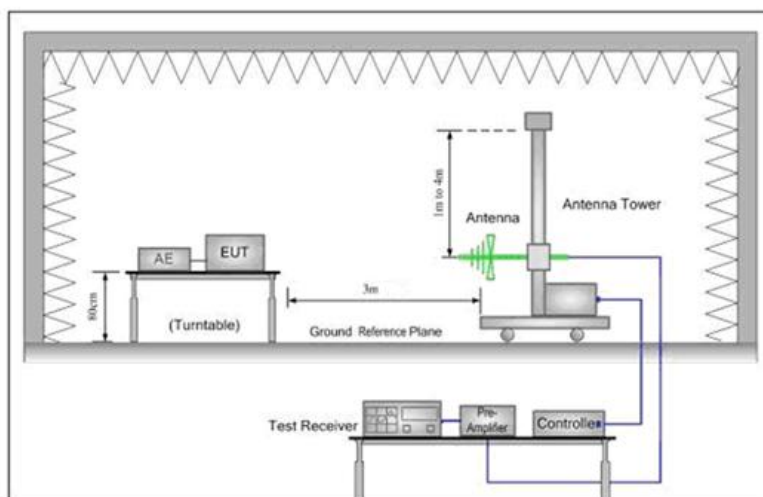
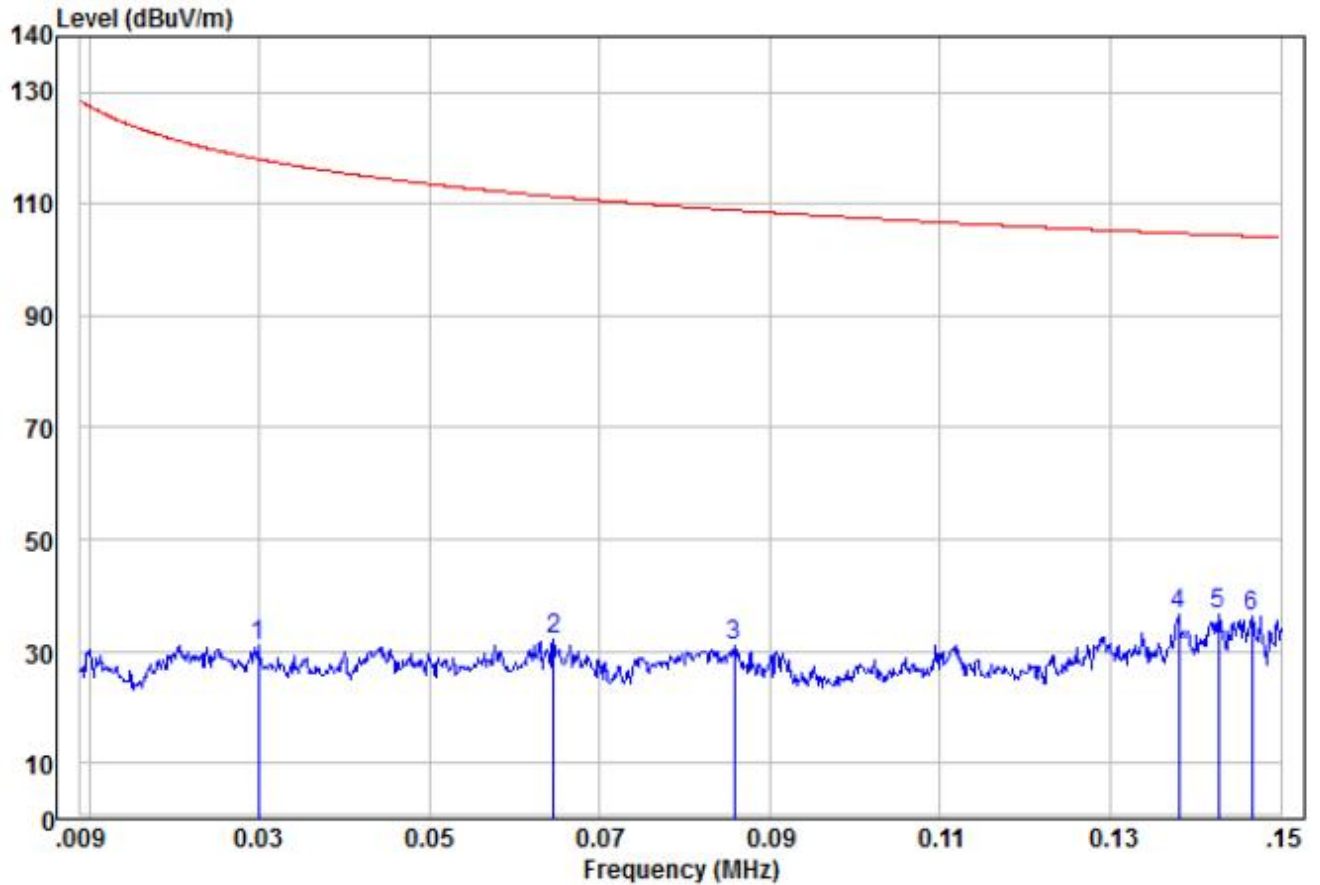


Figure 2. 30MHz to 1GHz

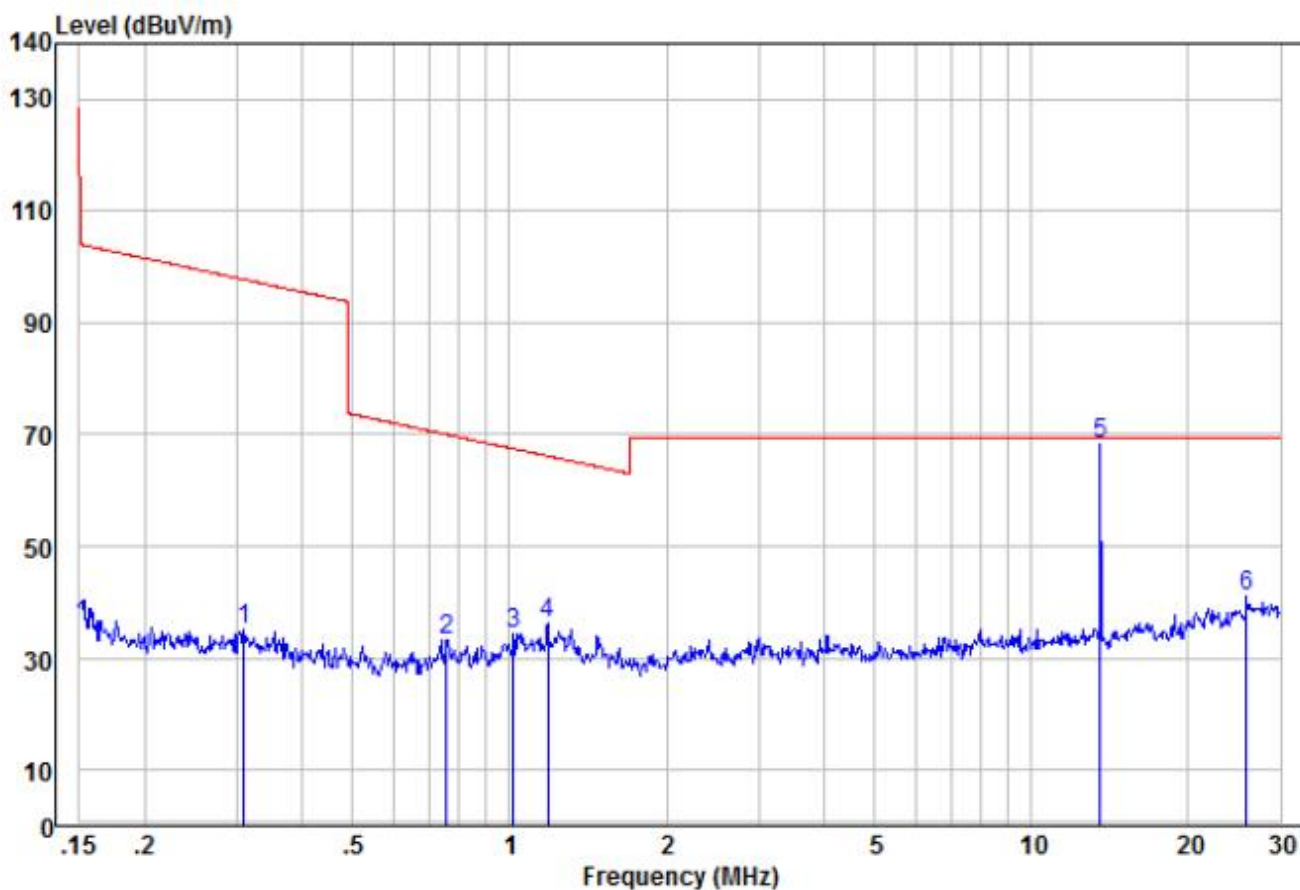
<p>Test Procedure:</p>	<ol style="list-style-type: none"> 4. The EUT was placed on the top of a rotating table 0.8 meters above the ground at a 3 meter semi-anechoic chamber. The table was rotated 360 degrees to determine the position of the highest radiation. 5. The EUT was set 3 meters away from the interference-receiving antenna, which was mounted on the top of a variable-height antenna tower. 6. The antenna height is varied from one meter to four meters above the ground to determine the maximum value of the field strength. Both horizontal and vertical polarizations of the antenna are set to make the measurement. 7. For each suspected emission, the EUT was arranged to its worst case and then the antenna was tuned to heights from 1 meter to 4 meters (for the test frequency of below 30MHz, the antenna was tuned to heights 1 meter) and the rotatable table was turned from 0 degrees to 360 degrees to find the maximum reading. 5. The test-receiver system was set to Peak Detect Function and Specified Bandwidth with Maximum Hold Mode. 6. If the emission level of the EUT in peak mode was 10dB lower than the limit specified, then testing could be stopped and the peak values of the EUT would be reported. Otherwise the emissions that did not have 10dB margin would be re-tested one by one using peak, quasi-peak or average method as specified and then reported in a data sheet. 7. The radiation measurements are performed in X, Y, Z axis positioning. And found the X axis positioning which it is worse case, only the test worst case mode is recorded in the report.
<p>Test Mode:</p>	<p>Transmitting mode</p>
<p>Test Voltage</p>	<p>DC 24V</p>
<p>Test Result:</p>	<p>Pass</p>

Measurement Data

9kHz - 30MHz:



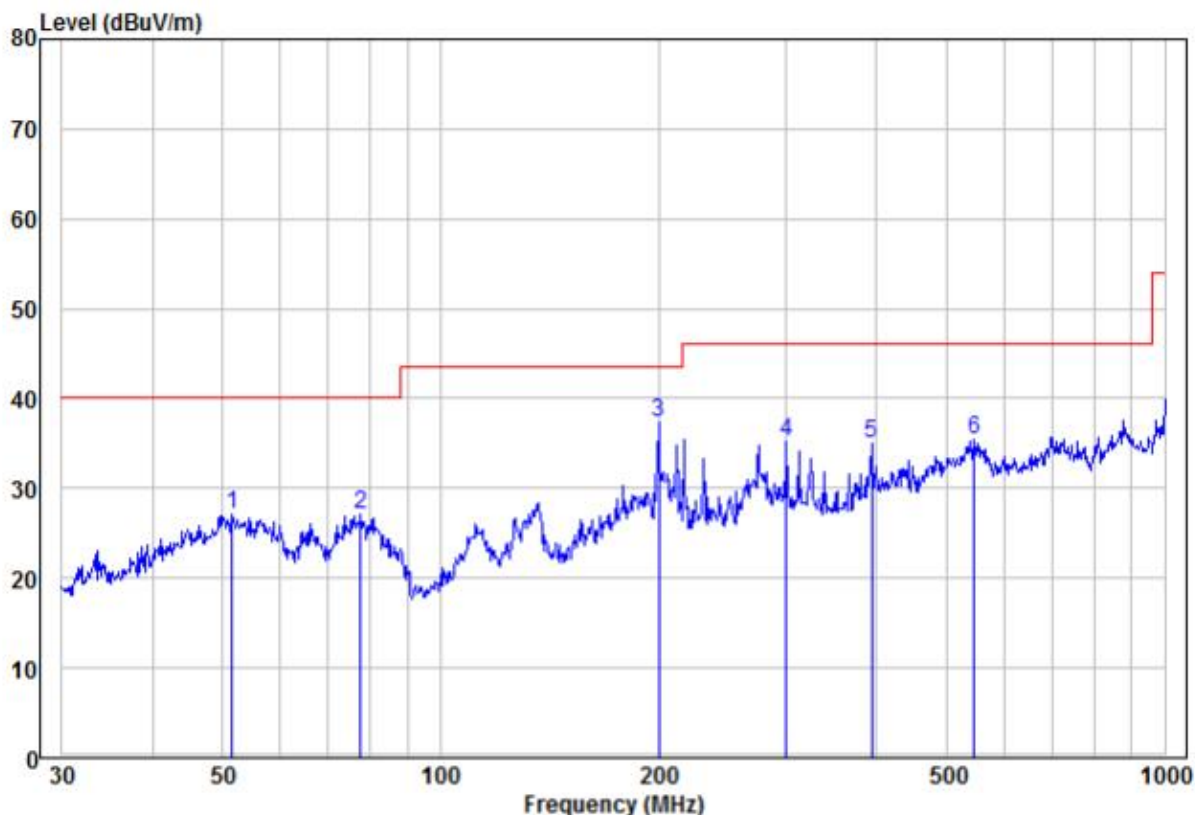
	Read		Limit	Over			
Freq	Level	Factor	Level	Line	Limit	Remark	
MHz	dBuV	dB/m	dBuV/m	dBuV/m	dB		
1	0.03	10.71	20.20	30.91	118.09	-87.18	Peak
2	0.06	11.94	20.04	31.98	111.40	-79.42	Peak
3	0.09	10.92	19.95	30.87	108.92	-78.05	Peak
4	0.14	16.61	19.82	36.43	104.80	-68.37	Peak
5 pp	0.14	16.61	19.81	36.42	104.51	-68.09	Peak
6	0.15	16.28	19.81	36.09	104.27	-68.18	Peak



	Read			Limit	Over	
Freq	Level	Factor	Level	Line	Limit	Remark
MHz	dBuV	dB/m	dBuV/m	dBuV/m	dB	
1	0.31	15.33	19.73	35.06	97.78	-62.72 Peak
2	0.76	13.76	19.50	33.26	70.01	-36.75 Peak
3	1.02	14.83	19.60	34.43	67.49	-33.06 Peak
4	1.18	16.70	19.58	36.28	66.16	-29.88 Peak
5 pp	13.55	48.45	19.90	68.35	69.50	-1.15 Peak
6	25.86	20.56	20.42	40.98	69.50	-28.52 Peak

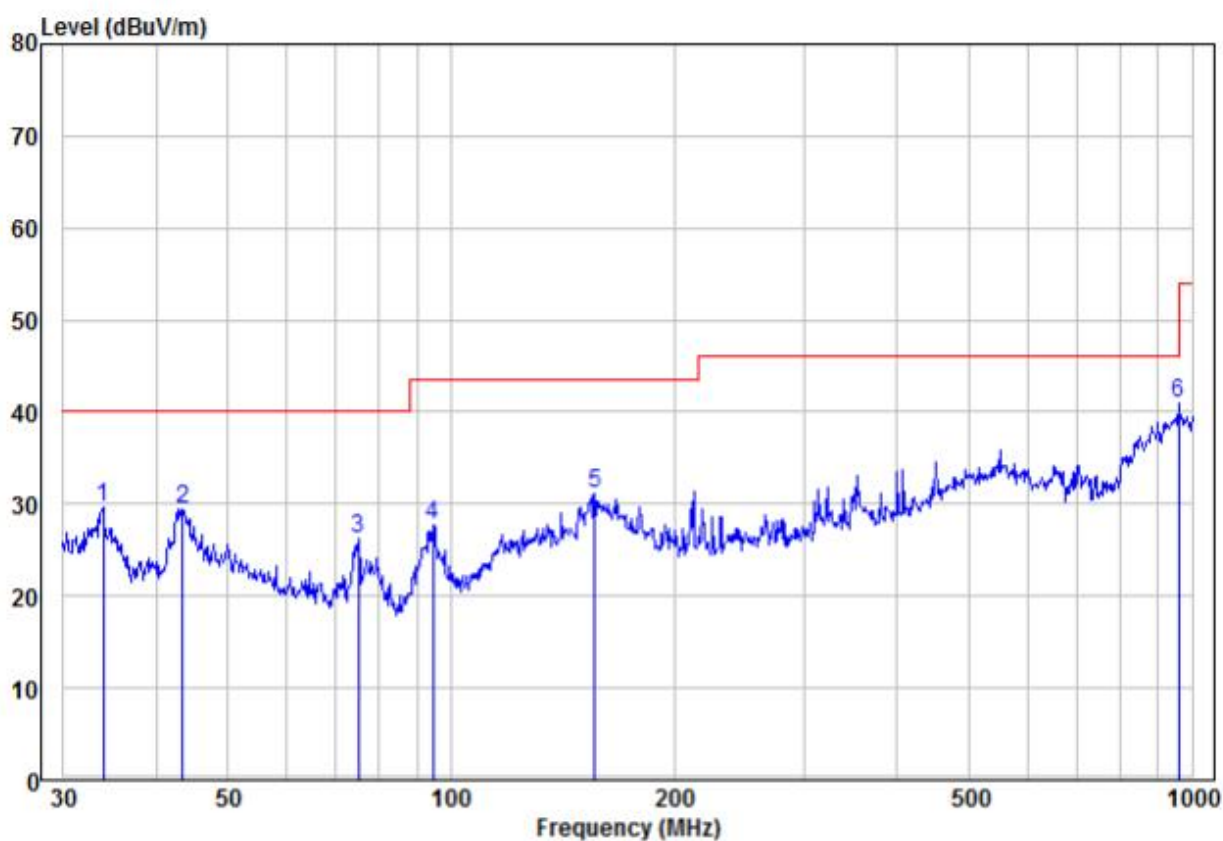
30MHz-1GHz

Horizontal



	Read Freq	Read Level	Factor	Level	Limit Line	Over Limit	Remark	Pol/Phase
	MHz	dBuV	dB/m	dBuV/m	dBuV/m	dB		
1	51.48	13.39	13.79	27.18	40.00	-12.82	Peak	HORIZONTAL
2	77.59	18.13	8.88	27.01	40.00	-12.99	Peak	HORIZONTAL
3 pp	199.99	24.24	13.02	37.26	43.50	-6.24	Peak	HORIZONTAL
4	300.37	17.52	17.78	35.30	46.00	-10.70	Peak	HORIZONTAL
5	393.47	15.86	19.03	34.89	46.00	-11.11	Peak	HORIZONTAL
6	545.18	13.09	22.26	35.35	46.00	-10.65	Peak	HORIZONTAL

Vertical



	Read Freq	Read Level	Factor	Limit Level	Over Limit	Remark	Pol/Phase
	MHz	dBuV	dB/m	dBuV/m	dBuV/m	dB	
1	33.92	19.48	10.09	29.57	40.00	-10.43 Peak	VERTICAL
2	43.51	16.84	12.66	29.50	40.00	-10.50 Peak	VERTICAL
3	74.92	17.09	9.24	26.33	40.00	-13.67 Peak	VERTICAL
4	94.43	15.65	12.10	27.75	43.50	-15.75 Peak	VERTICAL
5	156.46	21.07	10.11	31.18	43.50	-12.32 Peak	VERTICAL
6 pp	958.79	12.13	28.78	40.91	46.00	-5.09 Peak	VERTICAL

Remark:

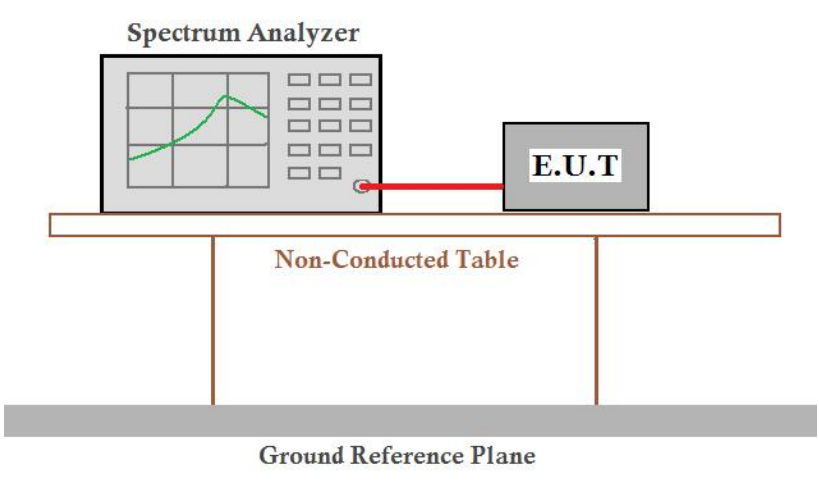
The field strength is calculated by adding the Antenna Factor, Cable Factor & Pre-amplifier. The basic equation with a sample calculation is as follows:

Factor = Antenna Factor + Cable Factor – Pre-amplifier Factor,

Level = Read Level + Factor,

Over Limit = Level - Limit Line.

5.4 Frequency Tolerance

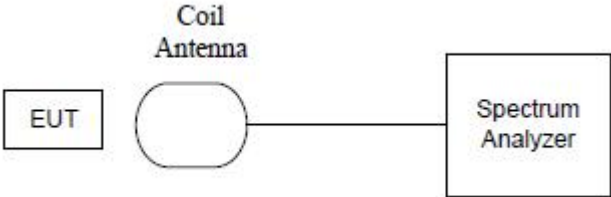
Test Requirement:	47 CFR Part 15 C Section 15.225(e)
Test Method:	ANSI C63.10: 2013
Test Setup:	 <p>The diagram illustrates the test setup. A Spectrum Analyzer is connected to an E.U.T. (Equipment Under Test) via a red cable. Both are placed on a Non-Conducted Table, which is supported by a Ground Reference Plane.</p>
Frequency Range:	Operation within the band 13.110-14.010 MHz
Requirements:	The frequency tolerance of the carrier signal shall be maintained within +/- 0.01% of the operating frequency over a temperature variation of -20 degrees to +50 degrees C at normal supply voltage, and for a variation in the primary supply voltage from 85% to 115% of the rated supply voltage at a temperature of 20 degrees C. For battery operated equipment, the equipment tests shall be performed using a new battery.
Method of Measurement:	The EUT was placed in an environmental test chamber and powered such that control element received normal voltage and the transmitter provided maximum RF output.
Test Result:	The unit does meet the FCC Part 15 C Section 15.225(e) requirements.

Test Frequency: 13.56MHz			Temperature:20°C	
Supply Voltage (V) DC	Test Result (MHz)	Deviation (kHz)	Limit ±0.01% (kHz)	Result
5	13.5612931	1.293	1.3560	Pass
4.25	13.5612931	1.293	1.3560	Pass
5.75	13.5612931	1.293	1.3560	Pass

Test Frequency: 13.56MHz			Normal Voltage:DC24V	
Temperature (°C)	Test Result (MHz)	Deviation (kHz)	Limit ±0.01% (kHz)	Result
-20	13.5612832	1.2832	1.3560	Pass
-10	13.5612825	1.2825	1.3560	
0	13.5612874	1.2874	1.3560	
10	13.5612828	1.2828	1.3560	
20	13.5612836	1.2836	1.3560	
30	13.5612887	1.2887	1.3560	
40	13.5612835	1.2835	1.3560	
50	13.5612842	1.2842	1.3560	

Note: Deviation (KHz) = (Test Result-13.56MHz)*1000

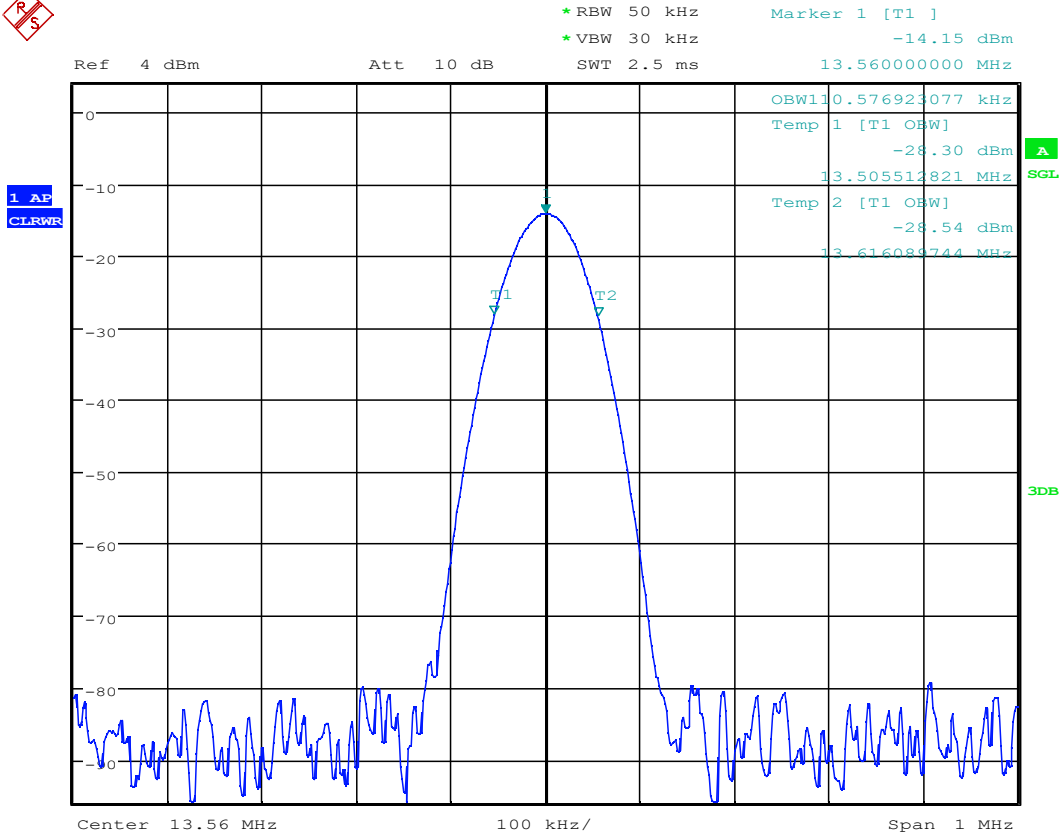
5.5 Occupied Bandwidth

Test Requirement:	47 CFR Part 15 C Section 15.215 (C)
Test Method:	ANSI C63.10: 2013
Test Setup:	
Frequency Range:	Operation within the band 13.110 – 14.010 MHz
Requirements:	Intentional radiators operating under the alternative provisions to the general emission limits, as contained in §15.217 through §15.257 and in subpart E of this part, must be designed to ensure that the 20 dB bandwidth of the emission is contained within the frequency band designated in the rule section under which the equipment is operated. The requirement to contain the 20 dB bandwidth of the emission within the specified frequency band includes the effects from frequency sweeping, frequency hopping and other modulation techniques that may be employed as well as the frequency stability of the transmitter over expected variations in temperature and supply voltage. If frequency stability is not specified in the regulations, it is recommended that the fundamental emission be kept within at least the central 80% of the permitted band in order to minimize the possibility of out-of-band operation.
Limit:	For 13.56 MHz the permitted frequency band is 14kHz, so the limit is 11.2 kHz.

Test Data:

20dB bandwidth (kHz)	FL (MHz)	FH (MHz)	Limit(MHz)	Result
110.577	13.5	13.6	13.110 – 14.010	Pass

Test plot as follows:



Date: 15.MAY.2025 09:41:54

Conducted Emission

Test Requirement: 47 CFR Part 15B
Test Method: ANSI C63.4
Test frequency range: 150kHz to 30MHz
Limit:

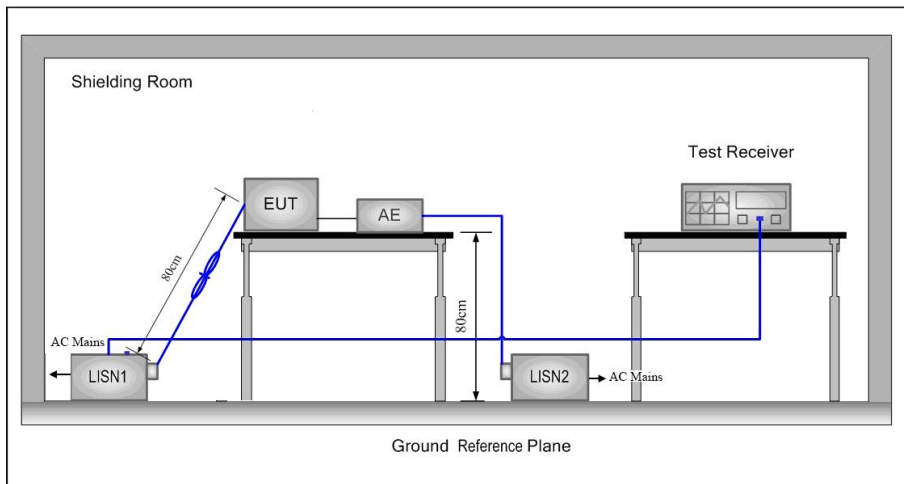
Frequency range (MHz)	Limit (dB μ V)	
	Quasi-peak	Average
0.15-0.5	66 to 56*	56 to 46*
0.5-5	56	46
5-30	60	50

* Decreases with the logarithm of the frequency.

Test Procedure:

- 1) The mains terminal disturbance voltage test was conducted in a shielded room.
- 2) The EUT was connected to AC power source through a LISN 1 (Line Impedance Stabilization Network) which provides a 50 Ω /50 μ H + 5 Ω linear impedance. The power cables of all other units of the EUT were connected to a second LISN 2, which was bonded to the ground reference plane in the same way as the LISN 1 for the unit being measured. A multiple socket outlet strip was used to connect multiple power cables to a single LISN provided the rating of the LISN was not exceeded.
- 3) The tabletop EUT was placed upon a non-metallic table 0.8m above the ground reference plane. And for floor-standing arrangement, the EUT was placed on the horizontal ground reference plane,
- 4) The test was performed with a vertical ground reference plane. The rear of the EUT shall be 0.4 m from the vertical ground reference plane. The vertical ground reference plane was bonded to the horizontal ground reference plane. The LISN 1 was placed 0.8 m from the boundary of the unit under test and bonded to a ground reference plane for LISNs mounted on top of the ground reference plane. This distance was between the closest points of the LISN 1 and the EUT. All other units of the EUT and associated equipment was at least 0.8 m from the LISN 2.
- 5) In order to find the maximum emission, the relative positions of equipment and all of the interface cables must be changed according to ANSI C63.4 on conducted measurement.

Test Setup:



Instruments Used:

Refer to section 5 for details

Test Mode:

Transmitting mode

Test Voltage

DC 24V

Test Results:

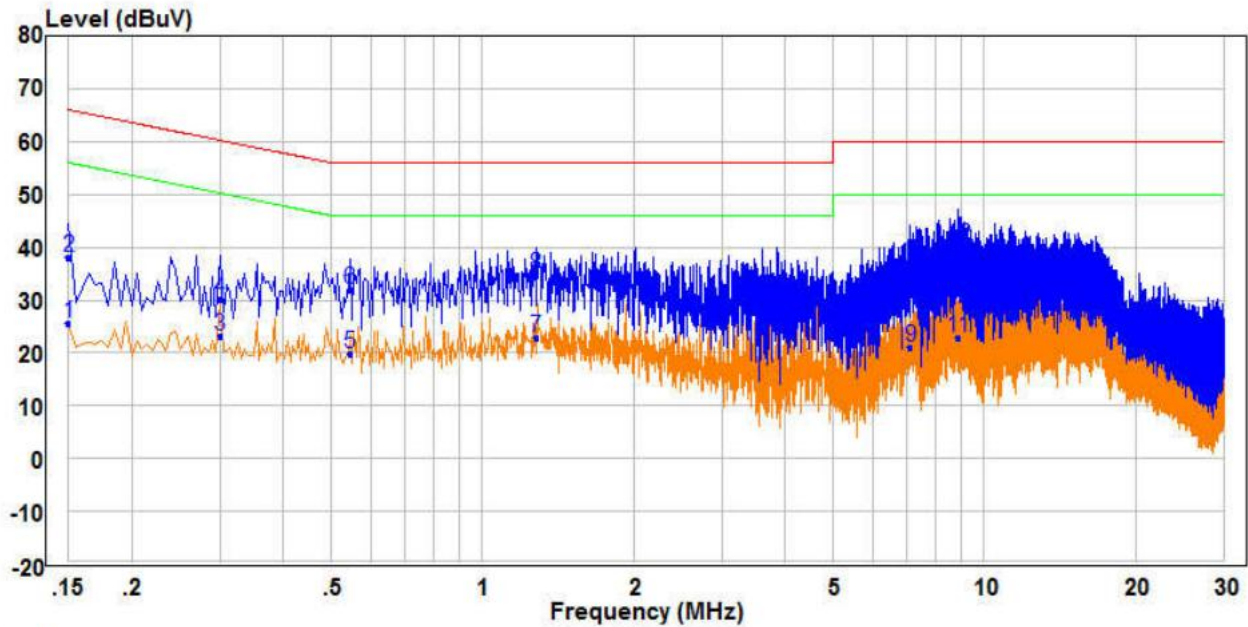
Pass

Measurement Data

An initial pre-scan was performed on the live and neutral lines with peak detector.

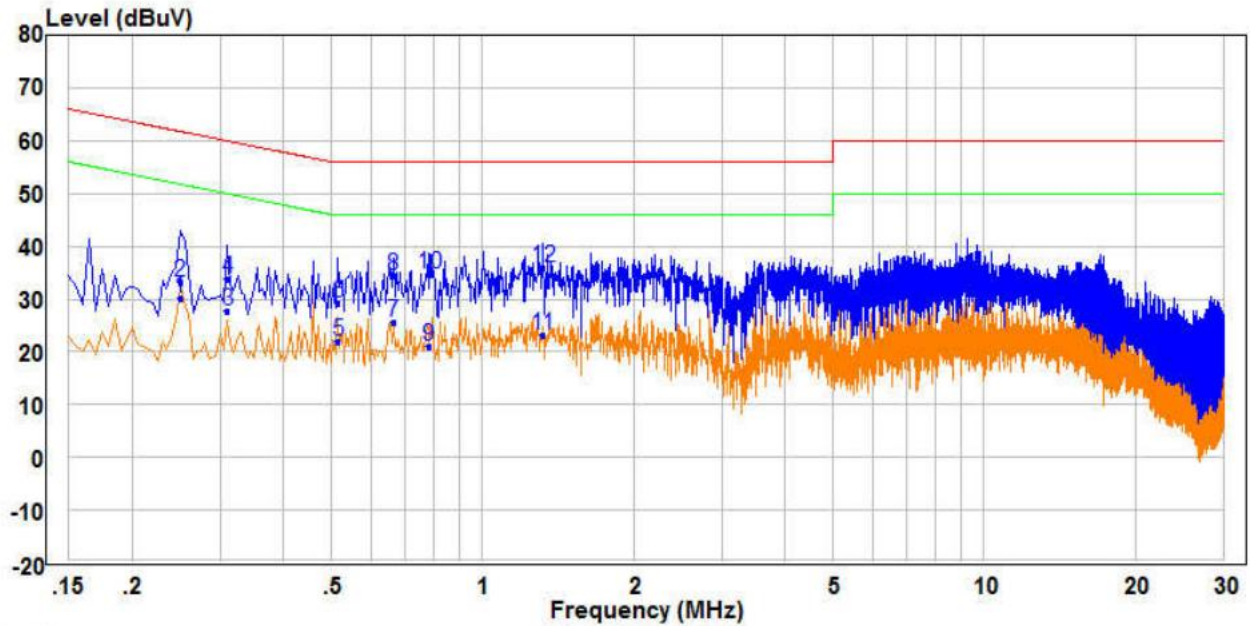
Quasi-Peak and Average measurement were performed at the frequencies with maximized peak emission were detected.

Live Line:



	Freq	Read Level	Factor	Level	Limit Line	Over Limit	Remark	Pol/Phase
	MHz	dBuV	dB	dBuV	dBuV	dB		
1	0.150	15.89	9.70	25.59	56.00	-30.41	Average	Line
2	0.150	28.25	9.70	37.95	66.00	-28.05	QP	Line
3	0.300	13.74	9.49	23.23	50.24	-27.01	Average	Line
4	0.300	20.58	9.49	30.07	60.24	-30.17	QP	Line
5	0.545	10.20	9.75	19.95	46.00	-26.05	Average	Line
6	0.545	22.32	9.75	32.07	56.00	-23.93	QP	Line
7 AV	1.280	12.41	10.39	22.80	46.00	-23.20	Average	Line
8	1.280	24.47	10.39	34.86	56.00	-21.14	QP	Line
9	7.115	11.24	9.80	21.04	50.00	-28.96	Average	Line
10	7.115	26.85	9.80	36.65	60.00	-23.35	QP	Line
11	8.865	12.97	9.86	22.83	50.00	-27.17	Average	Line
12 PP	8.865	30.41	9.86	40.27	60.00	-19.73	QP	Line

Neutral Line:

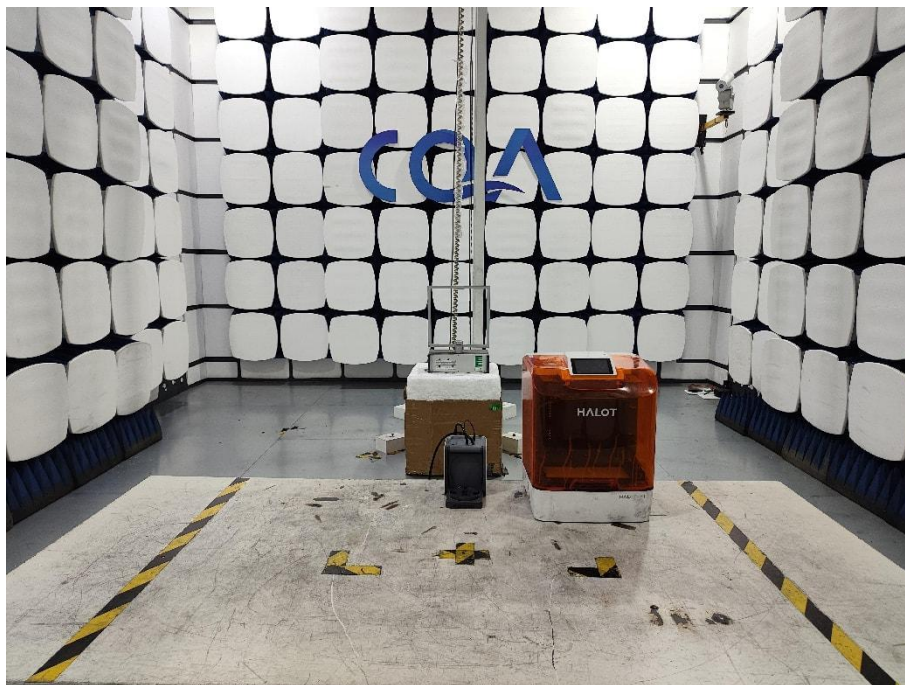


	Freq	Read Level	Factor	Level	Limit Line	Over Limit	Remark	Pol/Phase
	MHz	dBuV	dB	dBuV	dBuV	dB		
1	0.250	20.68	9.54	30.22	51.76	-21.54	Average	Neutral
2	0.250	23.52	9.54	33.06	61.76	-28.70	QP	Neutral
3	0.310	18.14	9.49	27.63	49.97	-22.34	Average	Neutral
4	0.310	24.33	9.49	33.82	59.97	-26.15	QP	Neutral
5	0.515	12.37	9.72	22.09	46.00	-23.91	Average	Neutral
6	0.515	19.53	9.72	29.25	56.00	-26.75	QP	Neutral
7 AV	0.665	15.83	9.87	25.70	46.00	-20.30	Average	Neutral
8	0.665	24.58	9.87	34.45	56.00	-21.55	QP	Neutral
9	0.780	11.26	9.85	21.11	46.00	-24.89	Average	Neutral
10	0.780	24.86	9.85	34.71	56.00	-21.29	QP	Neutral
11	1.315	13.56	9.72	23.28	46.00	-22.72	Average	Neutral
12 PP	1.315	26.23	9.72	35.95	56.00	-20.05	QP	Neutral

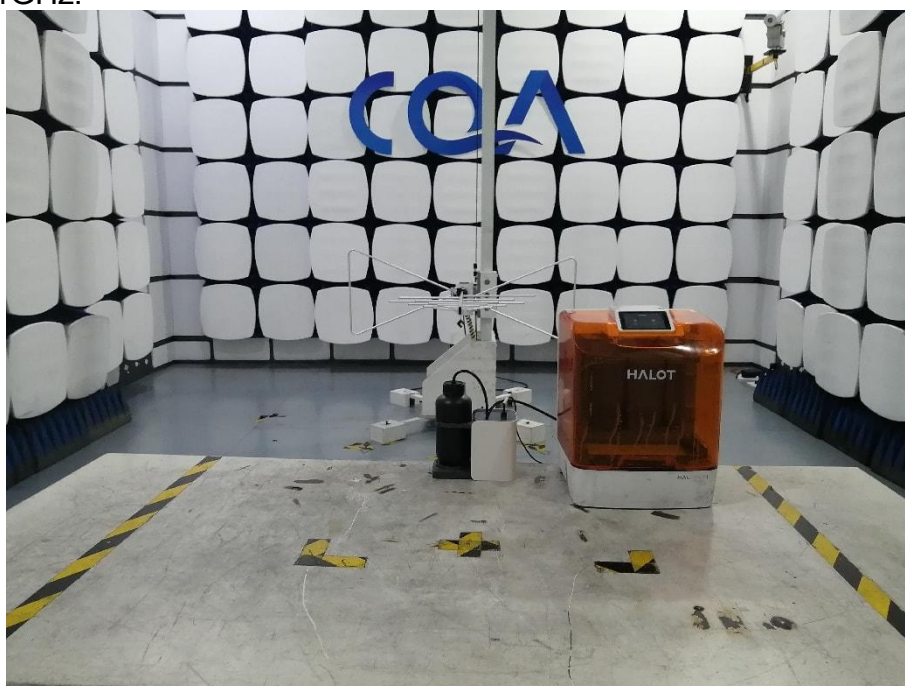
6 Photographs - EUT Test Setup

6.1 Radiated Emission

9KHz~30MHz:



30MHz~1GHz:



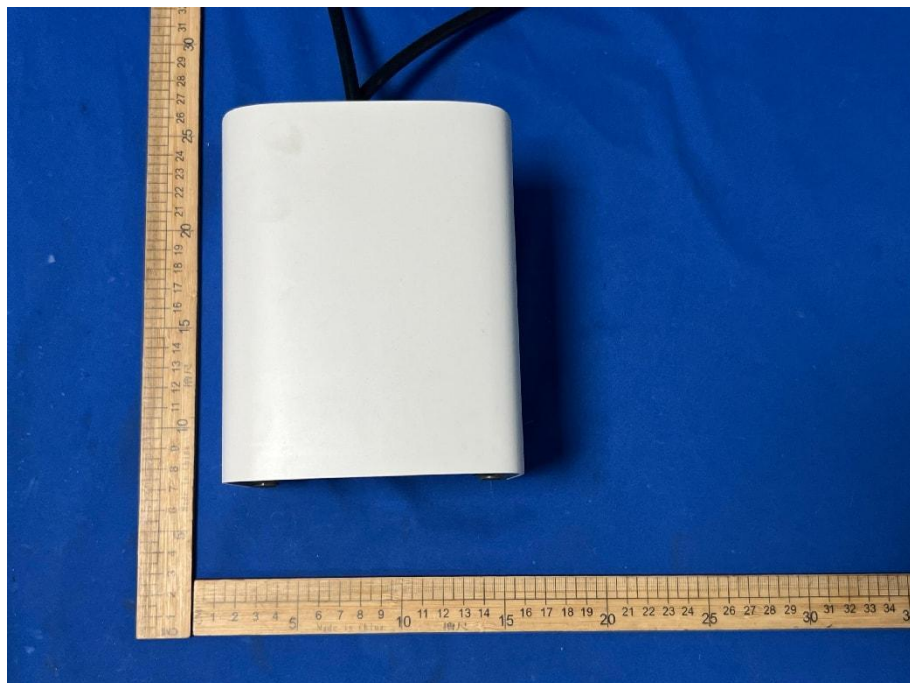
Conducted Emissions Test Setup

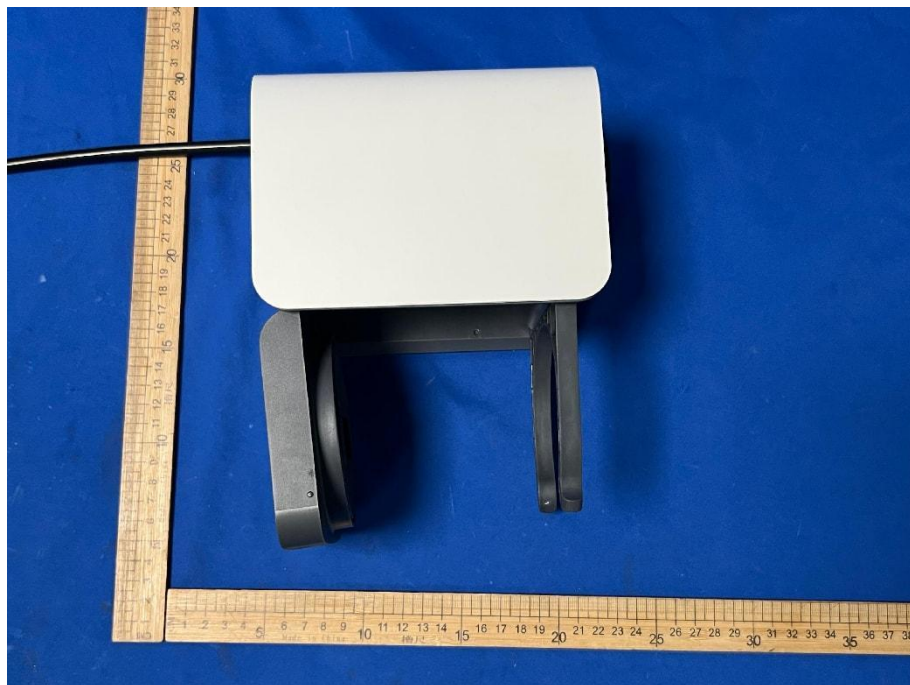


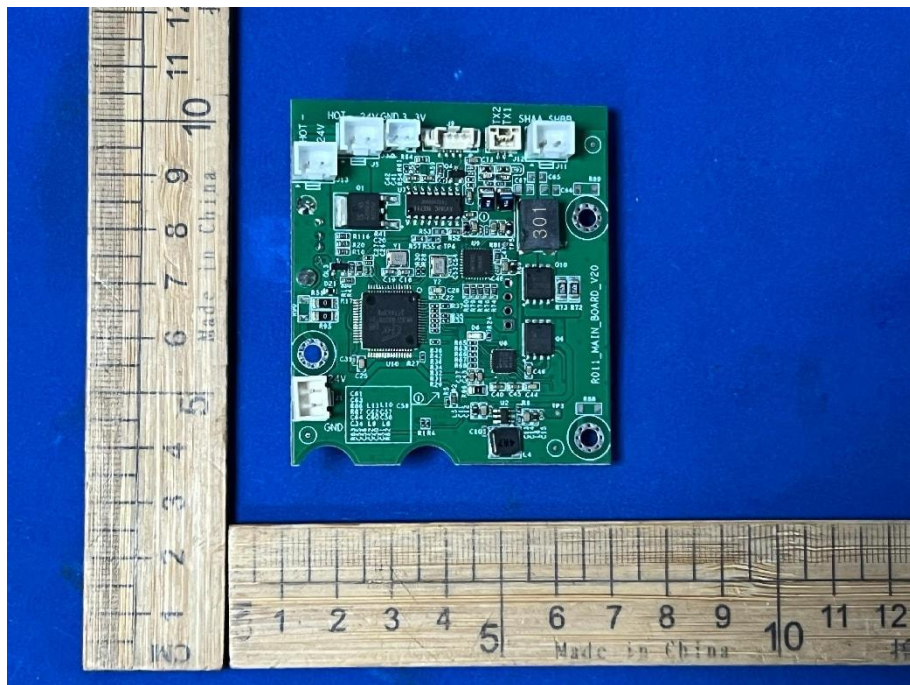
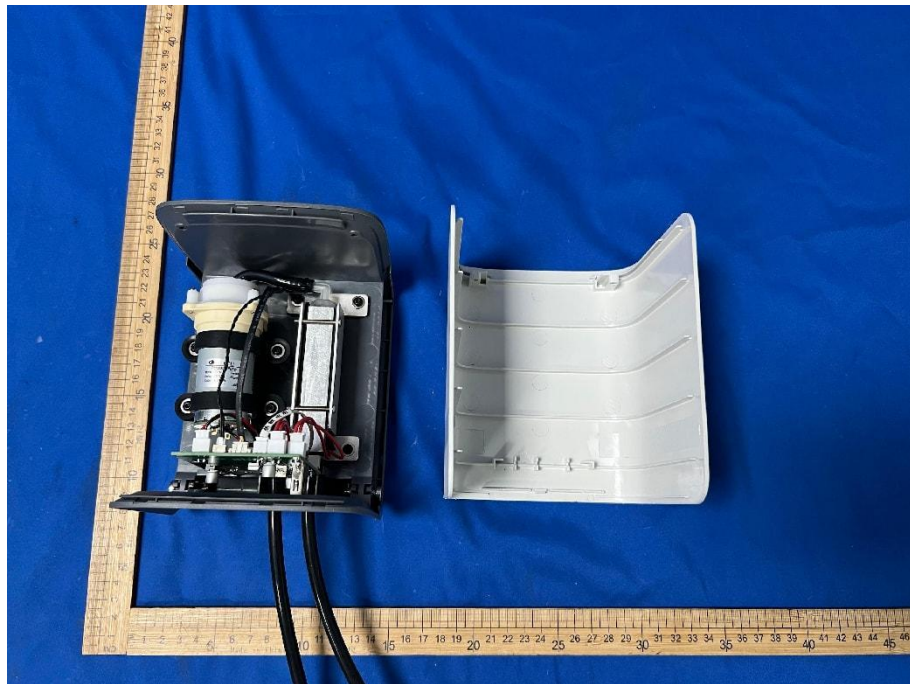
7 Photographs - EUT Constructional Details

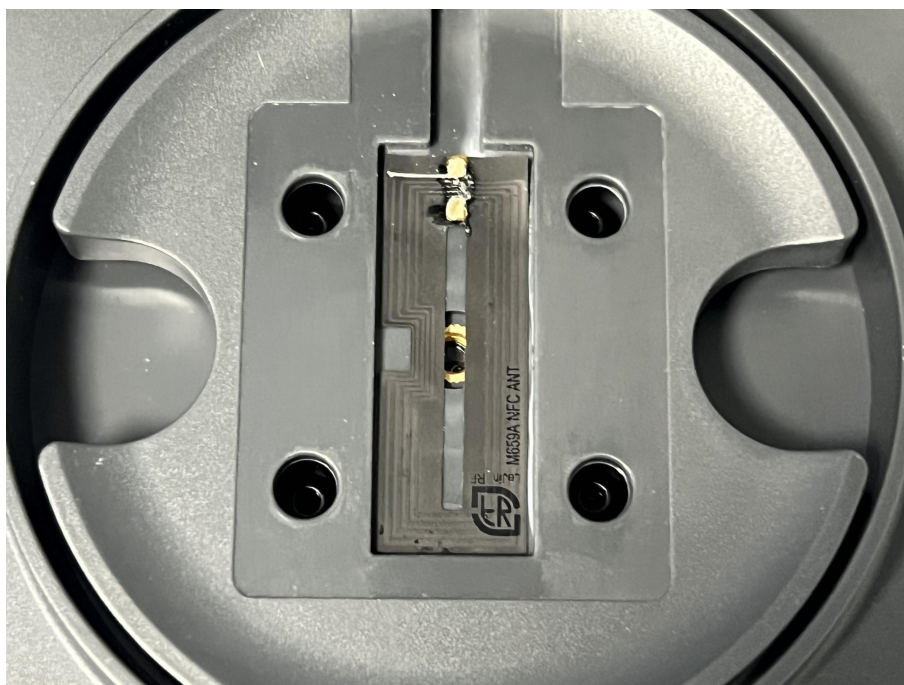
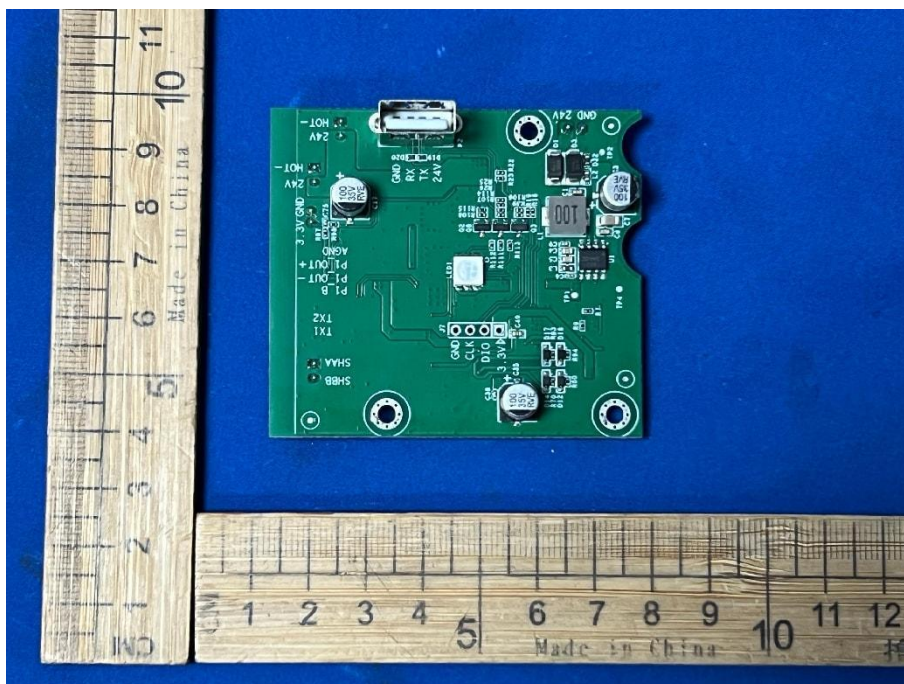


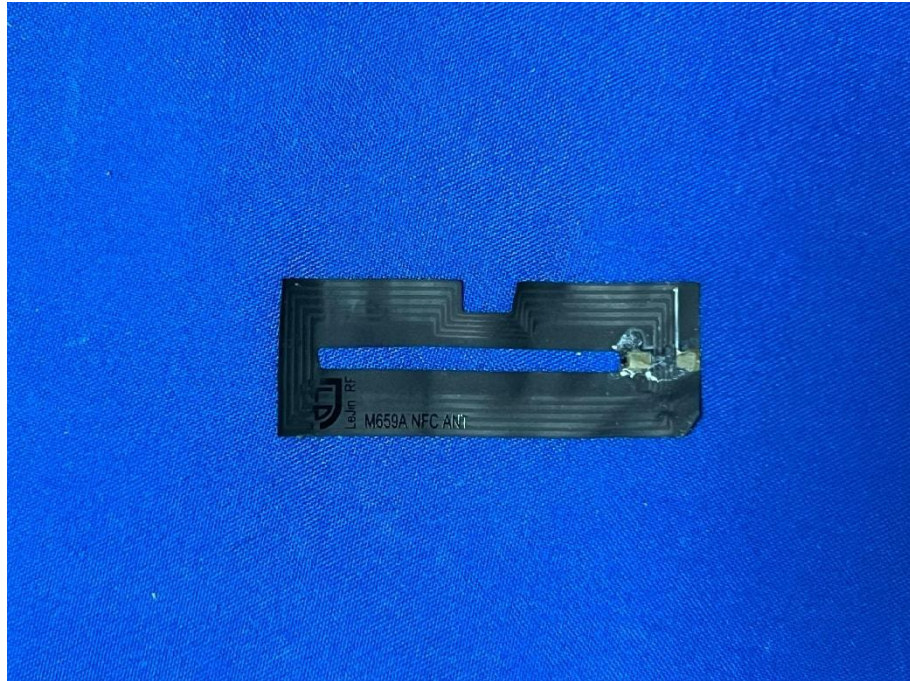












The End