



MULTIFUNCTIONAL BICYCLE AUDIO

M208

User's Manual



Dear users:

Thank you for choosing our company's products.

This product adopts PC-level 32-bit ARM processor and system control technology, integrates Bluetooth function, flashlight, portable power supply digital playback, AUX-IN and bell, unique cell phone holder and automatic clamping mechanism, and supports 3.5"-5.5" cell phones; it can be interacted and coordinated with cell phones, and it is an advanced and intelligent mobile device. It adopts the optimized Bluetooth EDT technology, supports MP3, WMA and WAV format in TF/USB flash drive media, and uses low-frequency radiator to improve the audio effect and ensure pleasant sound quality and strong penetrating power.

Thanks again for purchasing our sound equipment. To obtain the optimum performance and fully use all available functions, please read this manual carefully and mount properly to avoid unnecessary troubles. Please keep the manual properly for reference in the future.

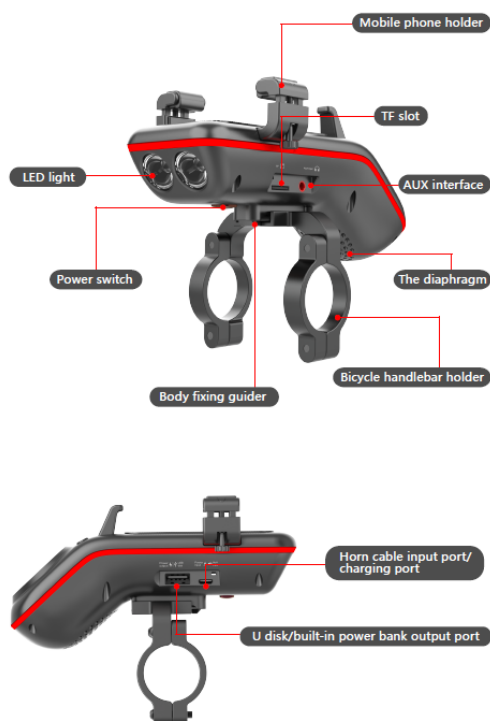
Before starting the installation, please read and understand the contents of the manual carefully. In order to protect you and others from possible personal injury or property damage, all instructions, warnings and precautions for the use and maintenance of this product are related.

Product introduction

Accessories:

1. Master unit: -----1 set
2. Micro 5P data cable:-----1 piece
3. Mounting bracket: -----1 piece
4. Rubber mat: -----4 pieces
5. User's Manual: -----1 piece
6. External bell ring set: -----1 piece

Function and operation



1. Power switch

1) Press to the right to the "ON" position to turn on the power switch; at this time the device starts to work normally, press to the left to "OFF" to turn off.
2) After the power switch is turned on, when no external device is connected, the default is Bluetooth mode, and the host emits a prompt tone of "The Bluetooth device is ready to pair".

2. USB socket

1) Insert the USB flash drive with music into the USB socket of the host according to the direction, and immediately enter the USB play mode (supporting MP3/WMA format music), and the host emits a "Music play model" prompt sound. U disk music will be played later.

2) The USB socket can be used to charge mobile phones of various brands only by connecting the charging cable in the power-on state.

3. Micro B socket

1) This port can be used to charge the built-in battery of the host regardless of whether it is turned on or off; when charging, the green power indicator flashes automatically (divided into four power sections), and when the battery is full, the green power indicator stops flashing. In the charging state, other functions of the host can also be used normally.

2) Micro B socket, you can connect the external speaker button cable to realize the car bell function. In the power-on state, the horn button is divided

into 2 buttons. Short press is the ring mode switch mode and the ring mode, and the long press is the increase or decrease of the ring volume. And size adjustment.

4. Flashlight switch/mode switch key

1) Continuously short press this key, and cycle in the sequence of "Turn on the light --- Flashing --- Turn off the light".

2) Long press this key, press "BT-U Disk-TF Card-AUX" to cycle through the sequence. After conversion, it will play the current mode sound ("The Bluetooth device is ready to pair", or "Music Play Model", or "AUX mode",) ("Music Play Model" is only played once in U disk and TF card mode). When the related device is not connected to the host, the mode corresponding to the default device does not participate in the cycle.

5. Pause playback/Bluetooth hookup

1) When there is no call, short press this button to pause the playback, and short press this button again to continue playing.

2) When the Bluetooth is successfully connected to the mobile phone, when there is an incoming call, short press this key to answer the call; after the call, short press this key again to hang up. Make a "ding-du" sound.

6. Downward selection/volume up key

In the BT/U disk/TF card playing state, short press this key to the next preferred song; long press this

key to increase the volume, when the maximum volume is reached, a continuous "di..." beep will sound.

7. Upward selection/volume down key

In the BT/U disk/TF card playing state, short press this button to go to the previous preferred song; long press this button to decrease the volume.

8. TF card socket

Insert the music TF card into the host card slot according to the direction, press forward with your finger to fasten it, enter the TF card play mode (supports MP3/WMA format music), the host emits a "Music play model" prompt sound, press again to pop up TF card.

9. Microphone

Pick up the sound during a Bluetooth call, you can start the call communication.

10. Bluetooth operation pairing method

1) Select the Bluetooth mode, and the host will emit the prompt tone "The Bluetooth devices is ready to pair".

2) Turn on the bluetooth function of the mobile phone, then search for the bluetooth device with the mobile phone (the host's Bluetooth identification name is UPPEL_M208), search to the host and connect the mobile phone and the host with Bluetooth.

3) The initial pairing password defaults to "0000". If the pairing is successful, the host will emit a "Connected successfully" prompt; at this time, you can play on your mobile phone's music player, and you can start Bluetooth playback or Bluetooth calls. Note: Some mobile phones do not need to enter the pairing password, and will automatically connect

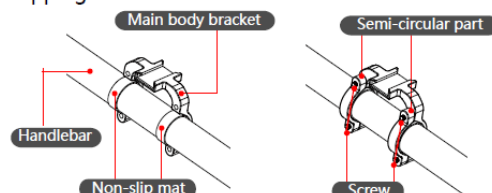
to Bluetooth after searching for the host.

4) When the host is turned on, it can be searched and connected through the mobile phone at any time. After the connection is successful, it will automatically switch to Bluetooth mode; when the Bluetooth device is disconnected, the host will emit a "Ding Long Dong" prompt sound.

11. Bracket installation

1) Take out the bracket and confirm that the bracket accessory contains the main body bracket part and 2 semicircular accessories and their corresponding nonslip rubber mats.

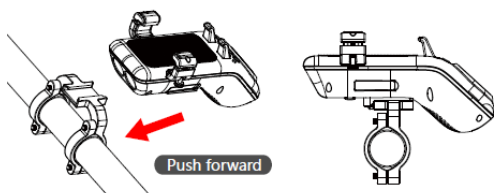
2) First fix the main part on the handlebar, and then install the other two semi-circular accessories respectively. In the middle, you need to choose a suitable silicone pad to prevent the bracket from slipping on the handlebar.



12. Host installation

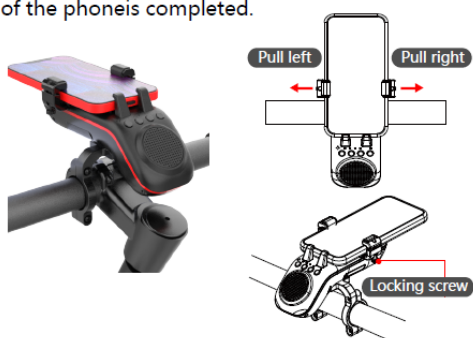
1) place the bicycle on a hard, flat ground.

2) Insert the main body of the bicycle speaker in the direction of the pin of the bracket, push forward till end, and synchronously check whether the main body speaker of the bicycle is stable and secured since there is the self-locking structure.



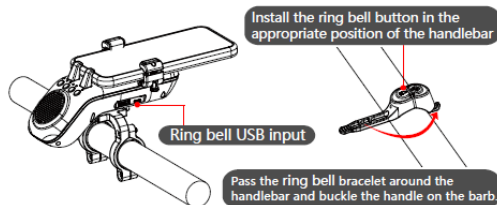
13. Mobile phone installation

- 1) Start by hand-tightening the vertically clamped thumb nuts on the left and right sides to release as much height stroke as possible.
- 2) Open the clamp arm, the width can be adjusted 50-90 mm, it can be placed less than 86 mm equipment, suit-able for most mobile phone navigators, such as Apple/Samsung/Huawei/Xiaomi/Sony/TCL and so on. Put the phone in the middle of the arm.
- 3) Start to lock the screw screw so that it can hold the phone stably and firmly in the vertical direction until the phone is not loose at all, and the installation of the phone is completed.



14. Ring bell accessories installation

- 1) Take out the speaker accessories and insert the MICRO USB head of the speaker data cable into the corresponding MICROB USB hole of the machine.
- 2) Install the silica gel button on handlebar.
- 3) The horn button is divided into 2 buttons, short press for ringtone switching mode and ringtone mode, and long press for the addition and subtraction and size adjustment of the ringtone volume.



15. Bike stem cap compatibility

! Please try to use a flat bicycle stem cap to prevent interference when removing the bicycle speaker device body. In case of inoperable situation, we recommend you to replace the stem cap in flat style.



Bike stem length spec in(mm)	Stem Cap remmendation
60mm~90mm	Must in flat style stem cap
100m~130mm	Optional can be in flat and convex style stem cap

Technical Parameters

1. Charging voltage/current: 5V/2A
2. Output voltage/current: 5V/600mA~5V/800mA
3. Bluetooth connection distance $\geq 10M$
4. Lighting distance $\geq 50M$
5. Mobile phone clip range: 50-90mm
6. Audio frequency response: 100HZ-18KHZ
7. Audio distortion $\leq 1\%$
8. Audio signal-to-noise ratio $\geq 60dB$
9. Standby current: $\leq 0.2mA$
10. Dustproof and waterproof grade: IP54
11. Lithium battery capacity: 5000mA

Tips:

1. The first charging time of the product is 4 hours, the sub-sequent charging time is about 3 hours, and the average use time for each full charge is about 30 hours. If you do not use this product for a long time, it is recommended to charge it once a month. If you do not use or charge it for a long time, it may damage the battery or affect the battery life.
2. Due to the continuous improvement of the product, the operating instructions and product design will be appropriately modified without notice. Due to the limited printing conditions, the illustrations in this instruction may not match the actual product.

UPPEL

www.uppel-tech.com
Technical support:
Support@uppel-tech.com
Tel: +86 0755 23771303



FCC Warning Statement

Changes or modifications not expressly approved by the party responsible for compliance could void the user's authority to operate the equipment. This equipment has been tested and found to comply with the limits for a Class B digital device, pursuant to Part 15 of the FCC Rules. These limits are designed to provide reasonable protection against harmful interference in a residential installation. This equipment generates uses and can radiate radio frequency energy and, if not installed and used in accordance with the instructions, may cause harmful interference to radio communications. However, there is no guarantee that interference will not occur in a particular installation. If this equipment does cause harmful interference to radio or television reception, which can be determined by turning the equipment off and on, the user is encouraged to try to correct the interference by one or more of the following measures:

- Reorient or relocate the receiving antenna.
- Increase the separation between the equipment and receiver.
- Connect the equipment into an outlet on a circuit different from that to which the receiver is connected.
- Consult the dealer or an experienced radio/TV technician for help.